

This building expansion program is essential for two principal reasons; the utter relevance of Christianity to the needs of people in Barrington and the world, and the necessity of an adequate meeting place from which to teach and proclaim this way of life. The validity of both these reasons can be abundantly demonstrated.

Christianity is a faith eternal but it is likewise the only practical way that men can live together in peace and harmony on the earth. From this soil democracy has sprung, and only rooted therein can democracy live. That this way of life might be better taught our children and others, more space and better facilities are urgently needed.

Carl G. Mettling

OUR PROBLEM...

OVERCROWDING



Now You May Ask "WHAT PART
CAN I PLAY TO MAKE THIS PLAN FOR
OUR CHURCH BECOME A REALITY"

The money we need for our program, according to careful estimates, is \$100,000. We are fortunate in having experienced counsel from within our church membership to guide us in forming a plan to raise this money. These are the highlights of the fund-raising plan:

- 1. Money will be raised through payments to be made over two-and-one-half year (30 month) period, beginning in June 1952. This spreads gift tax deductions over three tax years.
- 2. The money must be raised through a combination of Special Gifts and Monthly or Weekly contributions called "Builder's Shares."

WHAT IS A "BUILDER'S SHARE"?

A "Builder's Share" is a contribution of \$1.00 per week. Over the 30 month period of our fund raising this dollar-a-week contribution will bring the church \$130. Two Builder's Shares represent just about the cost of providing facilities for one child's religious education when added to the Special Gifts we are counting upon receiving.

How small a sacrifice - yet how much it can mean over a period of time! Here is how it works out:

If You Give	Per Week	Total in 30 Months
1 Builder's Share	\$1.00	\$130.00
2 Builder's Shares	2.00	260.00
3 Builder's Shares	3.00	390.00
5 Builder's Shares	7.00	650.00
7 Builder's Shares	7.00	910.00
10 Builder's Shares	10.00	1300.00

You may subscribe for as many Builder's Shares as you wish. Only by the help of many on a generous scale can we attain our goal.

How Can You Arrange to Make Your Contribution?

Volunteer workers from our Church are now preparing to see those among membership and friends to present this program. They can explain all details to you including how payments can be made on an easy budget plan to suit your needs and convenience. They can also answer your questions regarding how to figure tax deductions upon Church gifts so that you figure the size of the contribution you can make accordingly.

Let us all do our utmost!

BARRINGTON METHODIST CHURCH—Barrington, Illinois



HERE IS OUR PROGRAM TO MEET OUR GROWING CHURCH NEEDS

As you can see from the accompanying plans, our program consists of three general parts. They are equally important, each in its own way. Together they will enable us to make our church an ever stronger force for good for the whole Barrington community. In brief, the plan is this:

Enlarged and improved Sunday School facilities.

These are provided through a new wing to the church building extending North at the rear of the present structure. This addition consists of two stories and a basement. The new space, combined with our present basement area, will give us ten individual Sunday School Classrooms plus four large general meeting areas including one for the Primary and Beginner's Department on the second floor and a separate new Junior Department in the basement. Overcrowding will be eliminated and teaching effectiveness wonderfully improved.

Increased seating capacity for the Church itself.

A substantial number of additional pews are provided by opening up and using

what is now the lobby (providing new lobby space in front of it) and by building a balcony which will include the space now occupied by the Sawyer Room.

Modernized and enlarged facilities for Meeting, Social, Dining and Kitchen use.

The heart of this part of the plan is a completely re-vamped kitchen, food service and dishwashing section. This is admirably planned to permit serving several different dining areas with many more people than we can handle at present. The kitchen itself is an immense improvement and will be a blessing to those who use it. On the ground floor of the new section you will see a pleasant social room with its own fireplace. Thus we will have much larger facilities for both adult and youth fellowship occasions.

Other new facilities include a church office and minister's study, new and more satisfactory cloakroom arrangements and several new washrooms.

We invite you to study these plans well, feeling sure they will fill you with hope and enthusiasm. We are sure you will give your loyal help in carrying them through to completion.

BARRINGTON METHODIST CHURCH—Barrington, Illinois

"WHAT THEY SAY" ABOUT OUR NEW BUILDING PROGRAM

Our program as you see it now represents more than a year of active study by our Planning Committee. Before the final plan was adopted, many different ideas and alternatives were considered. Trips were made to inspect the facilities of numerous other churches. Many conferences were held among men and women of our Church and Sunday School groups to decide upon our needs and to find their best solutions. Our aim was not merely to accommodate a larger number of people. It was to enable us to do better work in every phase of our Church, Sunday School, Social and Community activities. We are happy to present the result; confident of your approval and support.

- Earl M. Schwemm

We may well be proud of the growth that has come to our congregation. Membership has more than doubled within recent years. But such growth brings a real handicap to church activities when overcrowding becomes so severe we are threatened with bursting at our seams! Our survey of present and near-future needs shows beyond question that action on building expansion for both adult and youth activities is immediate necessity.

- Corliss D. Anderson

Those who have admired the architectural beauty of the Barrington Methodist Church may feel perfectly reassured that the planned addition will mar nothing. It is traditionally correct in design, well proportioned and in excellent taste.

- John Van Bergen

The members of our congregation may feel assured that the new plan is both sound and economical from a building and engineering standpoint. It has had the benefit of an unusual amount of careful study and checking.

- William E. Noyes

While we have been principally concerned with needs of the present, our program was designed so as to leave the way open for still further expansion in years to come, while retaining the beauty of the church and making the best use of our property.

- Robert A. Campbell

You will be surprised to see how much added seating capacity has been created through the enlargement at the rear of the main floor and the building of the balcony. At our present rate of growth we will need this added capacity.

- Dale Hendee

Can anyone measure what Sunday School means in building the spiritual and moral fiber of our children? Nothing in our churchwork is more important, yet in the overcrowded conditions we are struggling with today even the wonderful work of our fine group of teachers is badly handicapped. The new Youth Center plan with its increased space and well-arranged classroom facilities deserves liberal support.

- Donald E. Nichols

The clever kitchen and serving facilities that are worked out in the new plans will allow us to do so much more with both adult and youth meetings. The way we could serve more than one dining area is especially well thought out.

- Mrs. Elden Simpson

Our kitchen has been so inadequate for so long that working in it is a trying experience at best. On our really large meetings it is almost a nightmare. How thrilled we are at the new plans!

- Mrs. Quentin R. Paulson

Did you ever try to manage a Sunday School class among the sinks and steam tables of a church kitchen? Or discuss religion with a dozen high school boys packed in a small choir dressing room? It isn't easy. How much more we can do with that precious one hour a week for religious education when we have modern classrooms as other churches do!

- Mrs. Percy Drover

It's wonderful to realize how much the new Young Peoples' Center will enable us to do toward bettering Boy Scout and Girl Scout work and other youth activities of our church.

- Mrs. James Dow

The new Sunday School and other facilities we have planned represent very modest ideas compared with what is to be found in many other churches in communities less privileged than ours.

- Mrs. William E. Hile

Our kitchen has been so inadequate for so long that working in it is a trying experience at best. On our really large meetings it is almost a nightmare. How thrilled we are at the new plans!

- Mrs. Quentin R. Paulson

Looking over the many years of my life in the congregation, our Methodist Church of today seems like a dream. The large attendance of young people at our worship services is an inspiration to everyone. We have much for which to give thanks in growth, in wider service, in good contributed to the Barrington community. It is clear that those years have given us a momentum which will move us forward even more strongly in the years ahead. Our new Building Plan shows us the way.

- Erman S. Smith

Among newer members of the congregation the need for larger facilities is doubly pressed home. For one thing, many are fresh from the contrast in other communities where additional plant has kept pace with increased attendance. Then, by the very fact of our moving to Barrington ... thereby increasing the pressure on present facilities ... we sense a large part of the responsibility for helping put over this building program.

- Leslie A. Nichols

A majority of us in the congregation today have never had an opportunity to share in the building of our beautiful Barrington Methodist Church. We welcome this chance to do our bit.

- Mrs. Wilson McCoy

Our church has an enviable record for thrift. We have always managed carefully, lived within our means and today are in a fine financial condition for all our normal operations. Our new Building Expansion program will reflect that same careful management.

Mrs. R. W. Dawson

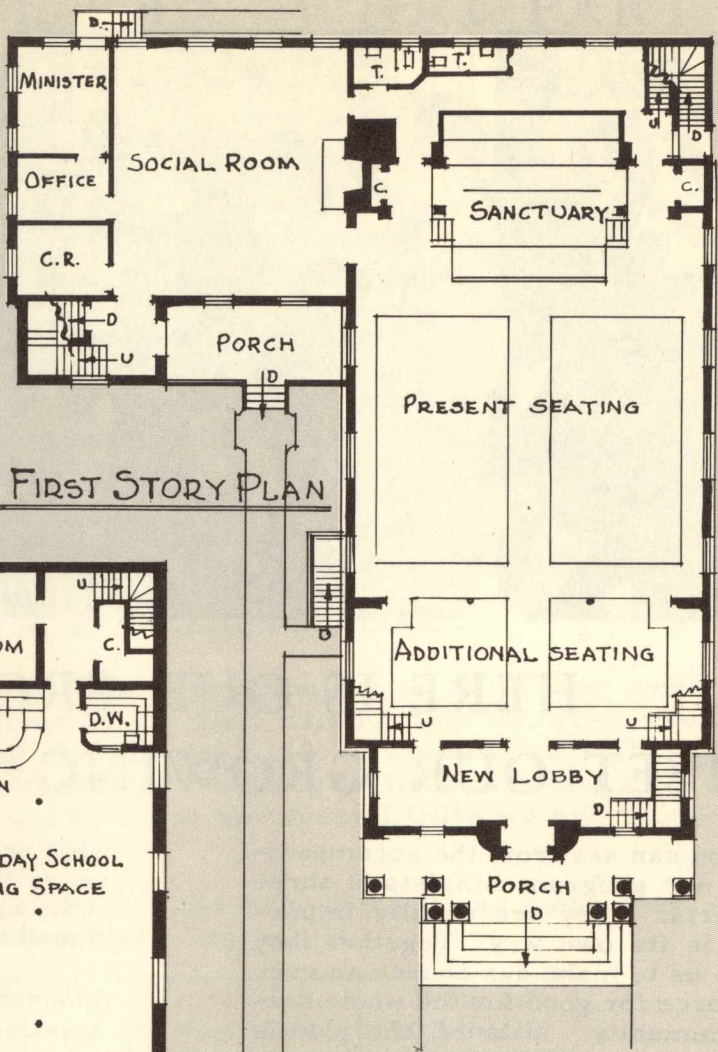
As one whose heart is still with my friends in the Barrington Methodist Church, I offer my congratulations for your well-thought-out plans. The years ahead will be richer for those whose personal sacrifices help to build this new instrument for His work.

- Rev. Bertram J. Swaney

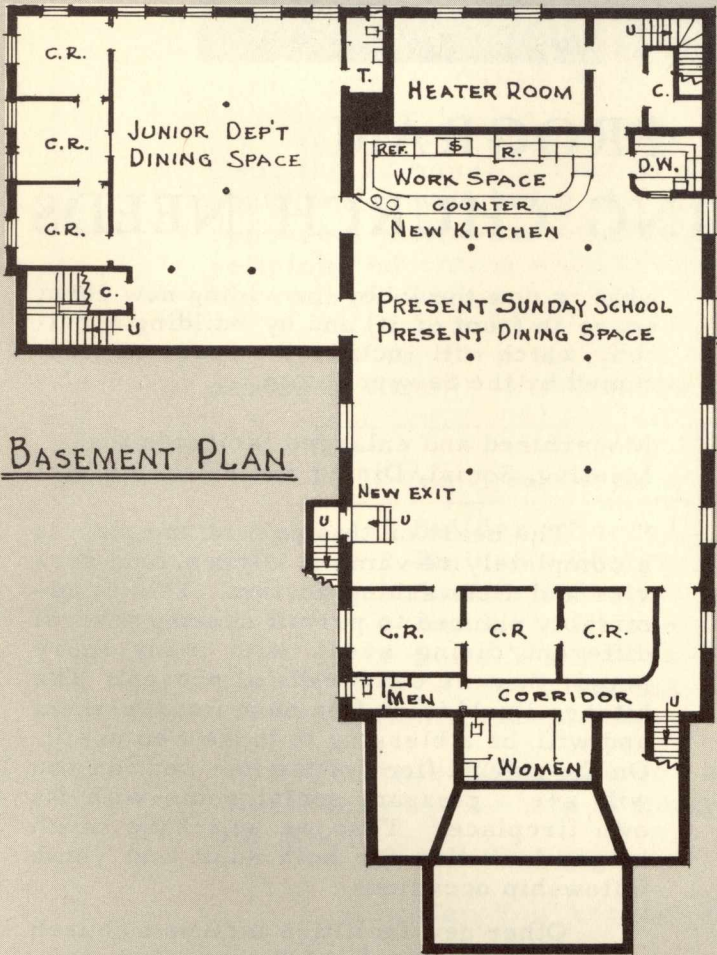
BARRINGTON METHODIST CHURCH

Barrington, Illinois

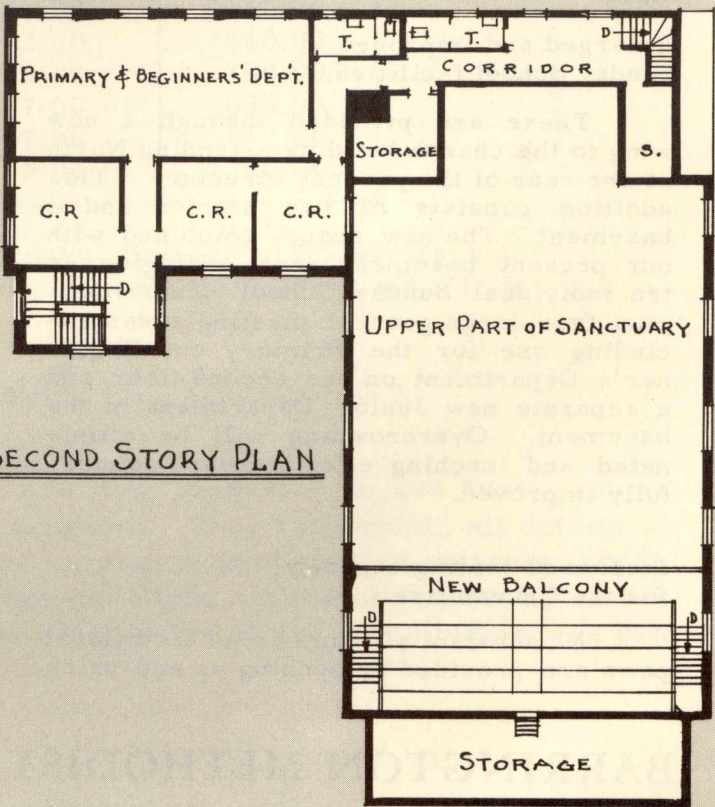
OUR
SOLUTION



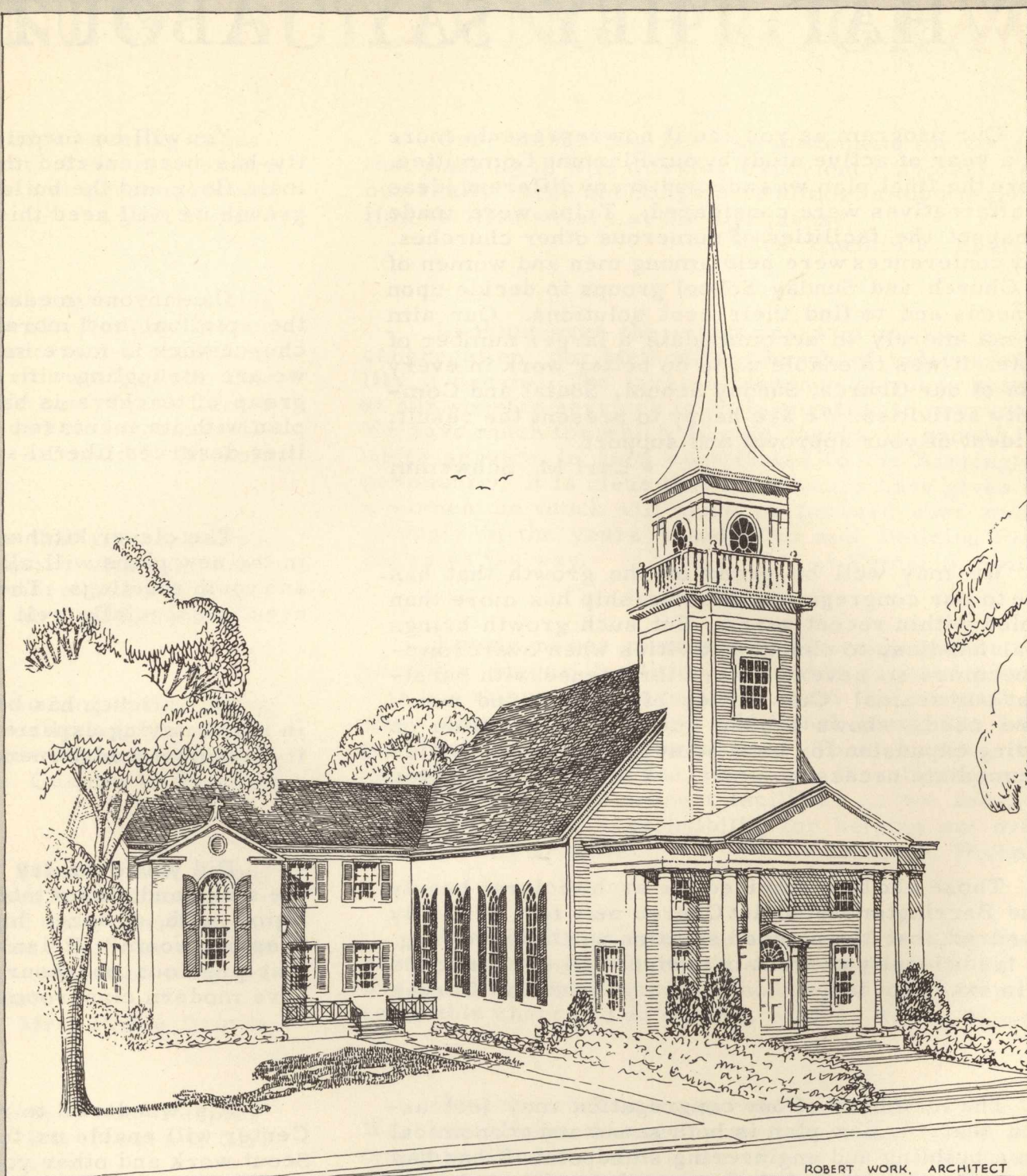
FIRST STORY PLAN



BASEMENT PLAN



SECOND STORY PLAN



For our children . . .

For greater Christian service . . .