

### PLANS FOR SECOND SCHOOL FESTIVAL

Will be Held June 2 at Deer Grove Park Which is Situated on the New Railroad.

### SUPERINTENDENT JOHN TO SPEAK

All County Life Directors of Cook County to be Present—Ball Games and Other Contests.

The second annual school festival for division number three, Cook county will be held at Deer Grove park, June 2, 1914. This event will be participated in by the schools of 22 districts including the villages of Barrington, Palatine and Arlington Heights.

This festival is in keeping with the movement plan for Cook county schools, which involves the idea of giving the boys and girls more opportunities for getting together in a social way—of meeting in a friendly rivalry to compete in educational contests and athletic events. Last year four or five such festivals were held in the county but the number this year has increased to ten in order to better handle the crowds which attend such meetings.

It is aimed to have the school assemblies at the park, entrance by 10:00 o'clock. Schools will then be formed in line for a short march about the grounds headed by the Barrington high school band later which will have an assembly at the pavilion where a short program of music will be rendered consisting of a short concert by the band and songs by the school.

A program of games for the primary children has been arranged, so that they may be assured a good time as well as the older pupils. Contests in geography and spelling have been arranged, each school being entitled to enter two contestants in each contest. Prizes will be awarded the winners entitled to obtain the preliminary contests, but no school prize will be given.

The athletic will consist of 50 yard dash, 100 yard dash, 200 yard dash, 400 yard dash, 800 yard dash, 1 mile, 2 mile, 4 mile, 8 mile, 16 mile, 32 mile, 64 mile, 128 mile, 256 mile, 512 mile, 1024 mile, 2048 mile, 4096 mile, 8192 mile, 16384 mile, 32768 mile, 65536 mile, 131072 mile, 262144 mile, 524288 mile, 1048576 mile, 2097152 mile, 4194304 mile, 8388608 mile, 16777216 mile, 33554432 mile, 67108864 mile, 134217728 mile, 268435456 mile, 536870912 mile, 1073741824 mile, 2147483648 mile, 4294967296 mile, 8589934592 mile, 17179869184 mile, 34359738368 mile, 68719476736 mile, 137438953472 mile, 274877906944 mile, 549755813888 mile, 1099511627776 mile, 2199023255552 mile, 4398046511104 mile, 8796093022208 mile, 17592186044416 mile, 35184372088832 mile, 70368744177664 mile, 140737488355328 mile, 281474976710656 mile, 562949953421312 mile, 1125899906842624 mile, 2251799813685248 mile, 4503599627370496 mile, 9007199254740992 mile, 18014398509481984 mile, 36028797018963968 mile, 72057594037927936 mile, 144115188075855872 mile, 288230376151711744 mile, 576460752303423488 mile, 1152921504606846976 mile, 2305843009213693952 mile, 4611686018427387904 mile, 9223372036854775808 mile, 18446744073709551616 mile, 36893488147419103232 mile, 73786976294838206464 mile, 147573952589676412928 mile, 295147905179352825856 mile, 590295810358705651712 mile, 1180591620717411303424 mile, 2361183241434822606848 mile, 4722366482869645213696 mile, 9444732965739290427392 mile, 18889465931478580854784 mile, 37778931862957161709568 mile, 75557863725914323419136 mile, 151115727451828646838272 mile, 302231454903657293676544 mile, 604462909807314587353088 mile, 1208925819614629174706176 mile, 2417851639229258349412352 mile, 4835703278458516698824704 mile, 9671406556917033397649408 mile, 19342813113834066795298816 mile, 38685626227668133590597632 mile, 77371252455336267181195264 mile, 154742504910672534362390528 mile, 309485009821345068724781056 mile, 618970019642690137449562112 mile, 1237940039285380274899124224 mile, 2475880078570760549798248448 mile, 4951760157141521099596496896 mile, 9903520314283042199192993792 mile, 19807040628566084398385987584 mile, 39614081257132168796771975168 mile, 79228162514264337593543950336 mile, 158456325028528675187087900672 mile, 316912650057057350374175801344 mile, 633825300114114700748351602688 mile, 1267650600228229401496703205376 mile, 2535301200456458802993406410752 mile, 5070602400912917605986812821504 mile, 10141204801825835211973625643008 mile, 20282409603651670423947251286016 mile, 40564819207303340847894502572032 mile, 81129638414606681695789005144064 mile, 162259276829213363391578010288128 mile, 324518553658426726783156020576256 mile, 649037107316853453566312041152512 mile, 1298074214633706907132624082305024 mile, 2596148429267413814265248164610048 mile, 5192296858534827628530496329220096 mile, 10384593717069655257060992658440192 mile, 20769187434139310514121985316880384 mile, 41538374868278621028243970633760768 mile, 83076749736557242056487941267521536 mile, 166153499473114484112975882535043072 mile, 332306998946228968225951765070086144 mile, 664613997892457936451903530140172288 mile, 1329227995784915872903807060280344576 mile, 2658455991569831745807614120560689152 mile, 5316911983139663491615228241121378304 mile, 10633823966279326983230456482242756608 mile, 21267647932558653966460912964485513216 mile, 42535295865117307932921825928971026432 mile, 85070591730234615865843651857942052864 mile, 170141183460469231731687303715884105728 mile, 340282366920938463463374607431768211456 mile, 680564733841876926926749214863536422912 mile, 1361129467683753853853498429727072845824 mile, 2722258935367507707706996859454145691648 mile, 5444517870735015415413993718908291383296 mile, 10889035741470030830827987437816582766592 mile, 21778071482940061661655974875633165533184 mile, 43556142965880123323311949751266331066368 mile, 87112285931760246646623899502532662132736 mile, 17422457186352049329324779900506532426552 mile, 34844914372704098658649559801013064853104 mile, 69689828745408197317299119602026129706208 mile, 139379657490816394634598239204052259412416 mile, 278759314981632789269196478408104518824832 mile, 557518629963265578538392956816209037649664 mile, 1115037259926531157076785913632418115299328 mile, 2230074519853062314153571827264836231198656 mile, 446014903970612462830714365452967246239712 mile, 892029807941224925661428730905934492479424 mile, 1784059615882449851322857461811868984958848 mile, 356811923176489970264571492362373796991776 mile, 713623846352979940529142984724747593983552 mile, 1427247692705959881058285969449495187967104 mile, 2854495385411919762116571938898990375934208 mile, 5708990770823839524233143877797980751868416 mile, 11417981541647679048466287755595961503736832 mile, 22835963083295358096932575511191923007473664 mile, 45671926166590716193865151022383846014947296 mile, 91343852333181432387730302044767692029894592 mile, 18268770466636286477546060408953538405978912 mile, 36537540933272572955092120817907076811957824 mile, 73075081866545145910184241635814153623915648 mile, 146150163733090291820368483271628307448231296 mile, 292300327466180583640736966543256614896462592 mile, 584600654932361167281473933086513229792925184 mile, 1169201309864722334562947866173026459585850368 mile, 2338402619729444669125895732346052919171700736 mile, 4676805239458889338251791464692105838343401472 mile, 9353610478917778676503582929384211676686802944 mile, 18707220957835557353007165858768423353373605888 mile, 37414441915671114706014331717536846706747211776 mile, 74828883831342229412028663435073693413494423552 mile, 149657767662684458824057326870147386826988847104 mile, 299315535325368917648114653740294773653977694208 mile, 598631070650737835296229307480589547307955388416 mile, 1197262141301475670592458614961179094615910776832 mile, 2394524282602951341184917229922358189231821553664 mile, 4789048565205902682369834459844716378463643107328 mile, 9578097130411805364739668919689432756927286214656 mile, 19156194260823610729479337839378865513854572429312 mile, 38312388521647221458958675678757731027709144858624 mile, 76624777043294442917917351357515462055418297717248 mile, 153249554086588885835834702715030924110836595434496 mile, 306499108173177771671669405430061848221673190868992 mile, 612998216346355543343338810860123696443346381737984 mile, 1225996432692711086686677621720247392886692763475968 mile, 2451992865385422173373355243440494785773385526951936 mile, 4903985730770844346746710486880989571546771053903872 mile, 9807971461541688693493420973761979143093422107807744 mile, 19615942923083377386986841947523958286186844215615488 mile, 39231885846166754773973683895047916572373688431230976 mile, 78463771692333509547947367790095833144747376862461952 mile, 15692754338466701909589473558019166628949475732492384 mile, 31385508676933403819178947116038333257898951464984768 mile, 62771017353866807638357894232076666515797902929969536 mile, 125542034707733615276715788464153333031595805859939072 mile, 251084069415467230553431576928306666063191611719878144 mile, 502168138830934461106863153856613332126383223439756288 mile, 1004336277661868922213726307713266644252766446879512576 mile, 2008672555323737844427452615426533288505532893759025152 mile, 4017345110647475688854905230853066577011065787518050304 mile, 8034690221294951377709810461706133154022131575036100608 mile, 16069380442589902755419620923412266308044263150072201216 mile, 32138760885179805510839241846824532616088526300144402432 mile, 64277521770359611021678483693649065232177052600288804864 mile, 128555043540719222043356967387298130464354105200577609728 mile, 257110087081438444086713934774596260928708210401155439456 mile, 514220174162876888173427869549192521857416420802310898912 mile, 1028440348325753776346855739098385043714832841604621778816 mile, 2056880696651507552693711478196770087429665683209243557432 mile, 4113761393303015105387422956393540174859331366418447114864 mile, 822752278660603021077484591278708034971866273283689429728 mile, 1645504557321206042154969182557416069943732546567379457456 mile, 3291009114642412084309938365114832139887465093134758914912 mile, 658201822928482416861987673022966427977493018626951788824 mile, 13164036458569648337239753460459328559549860372539035776 mile, 26328072917139296674479506920918657119099721745078071552 mile, 52656145834278593348959013841837314238199443490156114048 mile, 105312291668577186697918027683674628476398886980312282096 mile, 210624583337154373395836055367349256952797773960624564192 mile, 421249166674308746791672110734698513905599547921249128384 mile, 842498333348617493583344221469397027811199095842498256768 mile, 168499666689723498716668844293879405562239819168496513536 mile, 336999333379446997433337688587758811124479638336993027072 mile, 673998666758893994866675377175517622488959276673986054144 mile, 134799733711778798973335075435103524497791855334797208288 mile, 269599467423557597946670150870207048995583710669594416576 mile, 539198934847115195893340301740414097991167421339188833152 mile, 1078397869694230391786680603480828195982334842678377666304 mile, 2156795739388460783573361206961656391964669685356755332608 mile, 4313591478776921567146722413923312783929339370713511065216 mile, 8627182957553843134293444827846625567858678741427022130432 mile, 1725436591510768626858688965569325113571735748285404426064 mile, 3450873183021537253717377931138650227143471496570808852128 mile, 6901746366043074507434755862277304454286942993141617704256 mile, 13803492732086149014869511724554608908573885986283235451512 mile, 27606985464172298029739023491109217817147771972566470903024 mile, 55213970928344596059478046982218435634295543945132941806048 mile, 110427941856689192118956093964436871268591087890265883612096 mile, 220855883713378384237912187928873742537182175780531767224192 mile, 441711767426756768475824375857747485074364351561063534448384 mile, 883423534853513536951648751715494970148728703122127068896768 mile, 1766847069707027073903297503430989940297457406244254137793536 mile, 3533694139414054147806595006861979880594914812488508275587072 mile, 7067388278828108295613190013723959761189829824977016551754144 mile, 14134776557656216591226380027447919522379659649954033103508288 mile, 28269553115312433182452760054895839044759319299908066207016576 mile, 56539106230624866364905520109791678089518638599816132414033152 mile, 113078212461249732729811040219583356179037277199632264828066304 mile, 226156424922499465459622080439166712358074554399264529656132608 mile, 452312849844998930919244160878333424716149108798529059312265216 mile, 904625699689997861838488321756666849432298217597058118624530432 mile, 1809251399379995723676976643513333698864596435194116237249060864 mile, 3618502798759991447353953287026667397729192870388232474490121728 mile, 7237005597519982894707906574053334795458385740776464948980243456 mile, 14474011195039965789415813148106669590916771481552929897960486912 mile, 28948022390079931578831626296213339181833542963105859795920973824 mile, 57896044780159863157663252592426678363667085926211719591841947648 mile, 115792089560319726315326505184853356727334171852423439183683895296 mile, 231584179120639452630653010369706713454668343704846878367367790592 mile, 463168358241278905261306020739413426909336687409693756734735581184 mile, 926336716482557810522612041478826853818673374819387513469471162368 mile, 1852673432965115625445224082957657707637346749638775026938942324736 mile, 3705346865930231250890448165915315415274693499277550053877884649472 mile, 7410693731860462501780896331830630830549386998555100107755769298944 mile, 14821387463720925003561792663661261661098773997110200215511538597888 mile, 29642774927441850007123585327322523322197547994220400431023077195776 mile, 59285549854883700014247170654645046644395095988440800862046154391552 mile, 118571099709767400028494341309290093288790191976881600172409308783104 mile, 237142199419534800056988682618580186577580383953763200344818675666208 mile, 474284398839069600113977365237160373155160767907526400689637351332416 mile, 948568797678139200227954730474320746310321535815052801379274702664832 mile, 1897137595356278400455909460948641492620643071630105602758549405329664 mile, 3794275190712556800911818921897282985241286143260211205117098810659328 mile, 7588550381425113601823637843794565970482572286520422410234197621318656 mile, 15177100762850227203647275687589131940965144573040844820468395242637312 mile, 30354201525700454407294551375178263881930289146081689640936790485274624 mile, 60708403051400908814589102750356527763860578292163379281873580970549248 mile, 121416806102801817629178205500713055527721156584326758563747161941098496 mile, 242833612205603635258356411001421111055442313168653517127494323882196992 mile, 48566722441120727051671282200284222211088846233730703425498864776439392 mile, 9713344

**The Credibility  
of Christ's  
Resurrection**

By REV. WILLIAM EVANS, D.D.  
Director of Bible Course  
Massy Bible Institute, Chicago

TEXT-Acts 1:3

[illegible]

"Ah ah!" contradicted Greenleaf. "You ain't gwine to get Valtait, no."

"You are, 'lo!" Insisted Ricker, gratefully. "You need to be so plicky to get the Valtait, 'lo!"

"You are, 'lo!" Greenleaf said, and we put the bloodhounds on her.

"Greenleaf thout, 'Day ain't no dawg runnin' head'ed f'ech me," she said, "as 'er."

"But, Ricker," B'rtney interrupted, "that wasn't a murder. That wasn't a jail between them. That was a fight between two men."

"But it makes it more exciting," said Ricker. "More like a prize fight."

"I'll not charge you any more," said Ricker.

"I. The Empty Tomb. The fact that the tomb was empty is evidence of the resurrection—both friends and enemies; the women, the disciples, the angels, and the Jews. The resurrection counts for the absence of the body of

[illegible][illegible][illegible][illegible]

properties yet developed, and no use has been made of our unlimited water power. A handful of visitors come to enjoy the scenery, and the country is in its natural conditions, and the invigorating atmosphere, though our flora is not as luxuriant as that of the fjord country of Norway, and have the additional attraction of being unspoiled and unexplored. No charting has been made, and at that time, as already stated, we were the only boat on the coast, and the only one to get out from the straits of Hudson's bay to render navigation

[illegible]

100







When you buy a buggy you like to see a good assortment to choose from. We carry the well known Staver and Wisconsin Carriage Company's makes and usually have from 12 to 15 samples on our floor. It will pay you to spend a little extra time before buying and see

**Blackburn & Broughton**  
Wauconda, Illinois

### When in Lake Zurich—

For your Cigars, Tobaccos, Confections, Patent Medicines and Jewelry go to the up-to-date Confectionery Store of

**Frank Brothers**

### Lace Curtains

Strong Curtains made of double yarn throughout. Lace Curtains representing the Chiny effects, fine and durable \$1.40. A new novelty in weaving. Three distinct weaves, giving it the appearance of applique or double edged work \$1.60. Many other Novelties and Fine Patterns for sale. Call and see them.

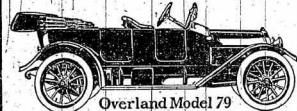


Richardson's  
Reliable  
Best Made  
In All  
Grades

### Rugs

Manhattan Brussels Rug. A new Oriental pattern; figures of medium size on self colored ground in two shades of coral. Figures in soft browns and steel blue. This Rug has a worsted face and the back is composed of high grade jute fillings. 9 x 12, \$11. Other good Bargains.

**A. W. Meyer**  
Barrington



Overland Model 79

**\$950**

With Grey & Davis Starter \$1075

The man who buys without comparing or analyzing only succeeds in grossly fooling himself. The better you acquaint yourself with values the more intelligent and economically you can buy.

Why, in an Overland can you save a clear 30 per cent? Because the \$950 Overland has a motor and wheelbase as large as most \$1200 cars.

The Overland is roomier, has greater leg stretch and a large three seat most \$1200 cars.

We also have a good line of second hand motorcycles and have the new Twin Excelsior on the floor.

For complete information and demonstration phone 301-R.

**A. J. Leonard & Son**  
Barrington, Illinois

### ITEMS OF INTEREST TO LOCAL PEOPLE

**Happenings of the Week Told in Short Paragraphs—What's Doing in and Near Our Hurdling Village.**

LaRoy Landwehr will visit in Chicago Saturday and Sunday.

Prof. Bennett of Waukegan visited here Monday with relatives.

John Waterman of Elgin visited with friends and relatives here Sunday.

Miss Joseph McElroy visited Saturday and Sunday with friends in Chicago.

Mrs. Clifford Stout visited in Chicago Wednesday and Thursday of this week.

Mrs. Irving Hollister of Saratoga was a recent visitor at the Hollister farm.

Mrs. Henry Krimm and daughter, Miss Gertrude, visited in Chicago Tuesday.

Mrs. and Mrs. Lyle Alverson left Monday for their new home at Washington, D. C.

Mrs. P. A. Hawley and Miss Leah Meyer returned Monday from their visit in Iowa.

Miss Albert Horn and Irving Horn visited Saturday and Sunday with relatives at Maywood.

Mrs. P. Jacobson and daughter Miss Nina, were visitors at Milwaukee, Wisconsin, Sunday.

Miss Mahol Peck visited from Friday until Tuesday at the home of her aunt, Mrs. Cushman, at Maywood.

Mrs. Calista Hollister of Waukegan is visiting at the home of her son, Frank, north of this village.

Glen and Roy Hicks and their family of Aurora visited Sunday with their sister, Mrs. F. W. Stout.

Miss Jeanette Thorne and Floyd Ross visited Saturday and Sunday with Mrs. Ross' relatives at Oakbrook, Wisconsin.

Mr. and Mrs. W. A. Randall of Shiloh have come to spend the summer with their daughter, Mrs. F. J. Krammer.

Mr. and Mrs. Harry Ottens and children Hazel and Hubert Linwell of Chicago spent Sunday at the home of E. W. Ottens.

Mrs. M. W. Noyes of Elgin who has been spending the past week at the home of E. D. Prossy returned to her home Sunday.

Spencer Otto, Jr., who has been confined to his father's home west of this village, for the past week, suffering with quinsy is again able to be out.

Edward Peters who is at the Auguste hospital in Chicago, was not quite so well last Saturday and Sunday but since then has been getting along nicely.

Mr. and Mrs. Lewis Hackett of Palmetto, Minnesota, were here Monday and Tuesday visiting with their son, Mrs. Drans Hackett and Mrs. Frank Hollister.

The citizens of Waukegan will give a home talent play at the LaSalle pavilion, Waukegan, tomorrow evening. The proceeds will be used for the new depot.

The Chicago Telephone company distributed new directories to their subscribers this week. They are a combined list of Arlington Heights, Palatine, Wheeling and Barrington.

Mr. and Mrs. George Prossy and Mr. and Mrs. C. E. Woodcock and two sons of Waukegan visited with Mr. and Mrs. E. D. Prossy and Mr. Prossy's mother Sunday.

Mrs. Mary Hubert and daughter Miss Adelaide, will depart tomorrow for Coal Springs, South Dakota, where they will pass several weeks visiting with a son and daughter of Mrs. Hubert.

Mr. and Mrs. John C. Miller and family returned Sunday from Danville where they have been visiting with their sister, Mrs. J. C. Stuebs and Mrs. Carl Gohl. They expect to return to California next week.

Harry Scott will give a free public exhibition in the public square of this village tomorrow evening at 8 o'clock. The program will last an hour and will consist of physical culture exercises, juggling, etc. The public is invited.

Miss Leonie Spohn and Alex H. Boehmer were week-end guests at the home of John Schwamm. Sunday afternoon visitors were Mr. and Mrs. William Tillman, and Mrs. Milton, and Charles Boehmer who motored from Highland Park.

A. V. B. Kimberly, who is spending a few weeks with his sister, Mrs. M. J. Kimberly at his home on the banks of Honey Lake, expects to leave for England accompanied by his wife, Kimberly, early in June. They will spend several weeks visiting the main points of interest in the British Isles.

The annual report of Frank L. W. Lerman, treasurer and collector for the village of Barrington, appears in another column of this paper. The report shows the condition of the treasury to be in a healthy state. Payment of a general improvement bond of \$2,000 due July 1 is provided for.

The blacksmith shops are closed today it being Ascension day.

The Merc' Octavo card club met last evening for a special meeting with Mrs. Edward F. Kirby.

Douglas Schneider received another parcel of Ford cars last Saturday. He has recently sold one to Herb Homuth.

Miss Ethel Hess of Lake Geneva, Wisconsin, visited last week with Miss Helen Krimm who lives west of this village.

Mr. and Mrs. Clifford Stout have rented the John Wenghal home on Country street, but will not occupy it until mid-winter.

The town of Cuba has received several cartloads of crushed stone from the mine recently and are putting it on the Lake Zurich road east from here.

The baseball game Tuesday between the Maitt team and the Barrington high school team was won by the former by the score of 9 to 7.

A business and social meeting of the D. Y. P. U. will be held at the home of Russell Brockway Monday evening. The members and friends are welcome.

The barn dance given at Simon Smith's Saturday night was a great success. Everybody reported a good time. William Thoms furnished the music. There will be another dance there, June 6, 1916.

Mrs. R. C. Goss and daughter, Mrs. W. H. Goss visited their aunt, Mrs. R. Goss, at Irving Park last Thursday. She will be 61 years old June 2, and they found her sewing carpet rags for the Aid society.

Dr. C. R. Tysinger, a practicing physician of Aurora moved Sunday into the residence owned by Mrs. Amelia Gilly on Rough street. He will maintain his office in the building occupied by F. J. Hawley & Son as a meat market.

There will be an entertainment of music and readings given in the M. E. church the evening of May 30. The reader who has been here for many years has never appeared in Barrington and comes highly recommended. Excellent music is also assured. Plans to come and bring your guests.

Rev. H. H. Thoren, Mrs. D. H. Richardson, Mrs. C. G. Murphy, Mrs. J. P. Giesse, Miss Myrtle Alameda Plagge are attending the twenty-first annual conference of the Woman's Home and Foreign Missionary society of the United Evangelical church now being held in Grand Chapel, Naperville. Mrs. R. Q. Munday and Miss Myrtle Plagge took part in the program.

**Births.**  
A boy was born Wednesday morning to Mr. and Mrs. Maurice Schmidt of Williams street.

Born to Mrs. Henry Miller, residing two miles south of Lake Zurich, Wednesday, May 20, a son.

Mr. and Mrs. Fred Erdman are the parents of a girl born last Sunday.

**Child Cries' Feverish' Sick**  
A young person with feverish, sick, coated tongue, pale, doesn't sleep; eat sometimes very little, then again very much stomach sour, breath, flat, pain in stomach, with diarrhea, grinds teeth while sleeping, starting up with terror, all suggests a Worm Kill—something that expels worms, and almost every child has them. Kickapoo Worm Killer is needed. Get a box today. Start at once. You won't have to coax, at Kickapoo Worm Killer is a easy confection. Expels the worms, the cause of your child's trouble. 50c. (Recommended by the Barrington Pharmacy, 404 R.)

**Mailing Lists Corrected to May 20.**  
The mailing lists of this paper were corrected up to May 20. You are invited to look at the table on your paper and if you find that your subscription has expired or if you are not pleased to have you remit the amount due. The subscription price of this paper is \$1.50 per year when paid in advance.

**Coughed For Three Years**  
"I am a lover of my godchild to humanity and science. Your medicine, Dr. King's New Discovery, cured my cough of three years standing," says Jennie Flemming, of New Dover, Ohio. Have you an annoying cough? Is it stubborn and won't yield to treatment? Get a 50c. bottle of Dr. King's New Discovery to day. What is it for? Jennie Flemming it will do for you, no matter how stubborn or chronic a cough may be. It stops a cough and stops throat and lung trouble. Relief or money back. Get a bottle today. 50c. and \$1.00. Recommended by the Barrington Pharmacy—404 R.

**Foot again Itch, quick way to stop it!**  
From your druggist get a small box of "Foot Itch" ointment. Rub it in a little of the ointment in this for five or ten minutes, rubbing the feet well. You will find this all right. You will be able to sleep with comfort, your feet will be cool and your feet will be able to walk with ease. New shoes will feel comfortable at all times. Druggist, Jeweler, Grocer, and every store that carries a line of goods will have it. It is a guaranteed cure. Valuable if the feet are itchy in each shoe. If your druggist does not carry it, write to the manufacturer, The "Duntley" Co., 1000 Broadway, New York City. A package will be sent you for 10c.

**Read Chemical Co., Mt. Prospect, Ill.**

### Order Brick Ice Cream Now

Now is the time to leave your order for Brick Ice Cream for Memorial Day. Orders left early will get my personal supervision and be delivered in good time. Don't delay until the last minute but do it now

**F. O. Stone**

1 CATER TO PARTICULAR PEOPLE

### ANNOUNCEMENT

With the Opening of the Ice Cream Season I herby wish to announce that I will carry again this year the celebrated

**Hawthorne Ice Cream**

My Ice Cream Parlor will be conducted in the Cleanest and Most Sanitary way possible. Any Ladies wishing to enjoy a Delicious Dish of this Delicacy will find our Ice Cream parlor just the place for it.



I also wish to remind you that I make daily a nice fresh line of Cakes, Rolls, Pastry, Bread, etc. 3 large or 6 small Loaves of fresh Bread for 25c. Try our Whole Wheat Bread, it's delicious. Patronize Home Trade. For your Bakery Goods go to the

**BARRINGTON HOME BAKERY**  
E. G. ANKELE, Prop.

### Barrington Mercantile Co.

**FARM TOOLS,  
Cement, Sand,  
Building Tile,  
Rock Phosphate  
and Ground  
Limestone. Our  
prices are right.**

### Barrington Mercantile Co.

**KEEPS YOUR HOME  
FRESH and CLEAN**

**Duntley**

**Combination Pneumatic Sweeper**

**THIS Swiftly-Sweeping, Easy-Running DUNTLEY Sweeper** cleans without raising dust, and at the same time picks up pins, lint, sawdust, etc., in ONE OPERATION. In case makes sweeping a simple task quickly finished. It reaches even the most difficult places, and eliminates the necessity of moving and lifting all heavy furniture.

**The Great Labor Saver of the Home—**Every home, large or small, can enjoy relief from broom drudgery and protection from the danger of flying dust.

**Duntley is the Pioneer of Pneumatic Sweepers—**Has the combination of the Pneumatic Suction, the most powerful revolving brush, very easily adjusted and absolutely guaranteed. In buying a vacuum cleaner, why not get the "Duntley" a find in your home is our opinion!

Write today for full particulars

**F. A. DOHMEYER, BARRINGTON**



**READ THE REVIEW**





## HORRIBLE CRIMES OF PANCHO VILLA

Murder, Plunder and Outrage Have Been Specialties of Rebel Leader.

HE BEGAN AS CATTLE THIEF

Shocking List of Homicides, Robberies and Torments Perpetrated by Carranza's General—Frequent Massacres of Prisoners

Murder, plunder and outrage have marked the career of Gen. Francisco Villa, commander of General Carranza's constitutional forces in northern Mexico. His record in the most barbaric and inhuman of crimes is so well known that it is not necessary to repeat it here.

Francisco Villa has shown himself to be a man of considerable military skill and the fame of his victories has to a great extent overshadowed the infamy of his crimes.

**Villa's Rise to Life.** A biography of Villa compiled by the Mexican Tribune and read by Senator Lodge in the United States senate supplies the following facts: Francisco Villa was born at Las Naves in the state of Durango, about the year 1858. He is a wholly uncultured, being unable to read and hardly able to sign his name.

In July, 1913, Villa took Carranza's side in the struggle between Carranza and Huerta. He was then a cattle thief and a bandit. He was then a cattle thief and a bandit. He was then a cattle thief and a bandit.

In the year 1917 he was in partnership with one Francisco Rios, a cattle thief in Chihuahua, and selling them.

After this he went to the small town of Cuernavaca, where he took possession of a man of more than thirty years of age, named Don Dolores Meron, and made him his "ranchman" of 1909.

At this time he killed him with his own hands. He then went to the small town of Cuernavaca, where he took possession of a man of more than thirty years of age, named Don Dolores Meron, and made him his "ranchman" of 1909.

All His Prisoners Shot. On September 25, 1913, Villa, who had been overpowered by a force of over 500 federal troops, fled every prisoner shot.

Villa has shot in Chihuahua 150 non-combatants, the greater number being poor people who could not leave for fear of reprisals or because they thought they ran no risk, as they took no part in politics, for all the people who are connected with the government had before Villa entered the state.

Spurred on by the fact that he had the aid of General Huerta, Villa, who had been overpowered by a force of over 500 federal troops, fled every prisoner shot.

Villa has shot in Chihuahua 150 non-combatants, the greater number being poor people who could not leave for fear of reprisals or because they thought they ran no risk, as they took no part in politics, for all the people who are connected with the government had before Villa entered the state.

Spurred on by the fact that he had the aid of General Huerta, Villa, who had been overpowered by a force of over 500 federal troops, fled every prisoner shot.

Villa has shot in Chihuahua 150 non-combatants, the greater number being poor people who could not leave for fear of reprisals or because they thought they ran no risk, as they took no part in politics, for all the people who are connected with the government had before Villa entered the state.

Spurred on by the fact that he had the aid of General Huerta, Villa, who had been overpowered by a force of over 500 federal troops, fled every prisoner shot.

Villa has shot in Chihuahua 150 non-combatants, the greater number being poor people who could not leave for fear of reprisals or because they thought they ran no risk, as they took no part in politics, for all the people who are connected with the government had before Villa entered the state.

Spurred on by the fact that he had the aid of General Huerta, Villa, who had been overpowered by a force of over 500 federal troops, fled every prisoner shot.

Villa has shot in Chihuahua 150 non-combatants, the greater number being poor people who could not leave for fear of reprisals or because they thought they ran no risk, as they took no part in politics, for all the people who are connected with the government had before Villa entered the state.

## PICK SPRINGFIELD FOR CONVENTION

U. C. T. Will Hold Next Meeting in Capital City.

DECATUR MAN IS HONORED

F. F. Lovett Is Elected Grand Commercial Travelers' Association at Chicago Session.

Springfield.—The United Commercial Travelers' Association of Illinois at the state convention in Chicago picked Springfield for the next meeting place.

It was decided to send a delegation to the national convention in Columbus, Ohio, to be held at the home for the establishment of a home for the blind in Columbus, Ohio.

A fund of \$10,000 already has been raised and the delegation will be sent to obtain an appropriation to build the home and provide for its permanent installation.

State officers elected were as follows: F. F. Lovett, Decatur, grand secretary; C. A. Woolley, Chicago, grand treasurer; T. W. Davis, Peoria, grand secretary; A. V. Varian, Peoria, grand secretary; O. H. Bishop, Bloomington, grand secretary; H. P. Moore, Springfield, grand secretary.

Members of the executive committee are: H. S. McCracken, Chicago; A. C. Kennedy, Peoria; J. P. Lovett, Decatur; D. H. Cline, Chicago; J. P. Colver, Springfield; O. H. Bishop, Bloomington; H. P. Moore, Springfield; H. V. Lamm, Chicago; and H. V. Lamm, Chicago.

Members of the executive committee are: H. S. McCracken, Chicago; A. C. Kennedy, Peoria; J. P. Lovett, Decatur; D. H. Cline, Chicago; J. P. Colver, Springfield; O. H. Bishop, Bloomington; H. P. Moore, Springfield; H. V. Lamm, Chicago; and H. V. Lamm, Chicago.

Members of the executive committee are: H. S. McCracken, Chicago; A. C. Kennedy, Peoria; J. P. Lovett, Decatur; D. H. Cline, Chicago; J. P. Colver, Springfield; O. H. Bishop, Bloomington; H. P. Moore, Springfield; H. V. Lamm, Chicago; and H. V. Lamm, Chicago.

Members of the executive committee are: H. S. McCracken, Chicago; A. C. Kennedy, Peoria; J. P. Lovett, Decatur; D. H. Cline, Chicago; J. P. Colver, Springfield; O. H. Bishop, Bloomington; H. P. Moore, Springfield; H. V. Lamm, Chicago; and H. V. Lamm, Chicago.

Members of the executive committee are: H. S. McCracken, Chicago; A. C. Kennedy, Peoria; J. P. Lovett, Decatur; D. H. Cline, Chicago; J. P. Colver, Springfield; O. H. Bishop, Bloomington; H. P. Moore, Springfield; H. V. Lamm, Chicago; and H. V. Lamm, Chicago.

Members of the executive committee are: H. S. McCracken, Chicago; A. C. Kennedy, Peoria; J. P. Lovett, Decatur; D. H. Cline, Chicago; J. P. Colver, Springfield; O. H. Bishop, Bloomington; H. P. Moore, Springfield; H. V. Lamm, Chicago; and H. V. Lamm, Chicago.

Members of the executive committee are: H. S. McCracken, Chicago; A. C. Kennedy, Peoria; J. P. Lovett, Decatur; D. H. Cline, Chicago; J. P. Colver, Springfield; O. H. Bishop, Bloomington; H. P. Moore, Springfield; H. V. Lamm, Chicago; and H. V. Lamm, Chicago.

Members of the executive committee are: H. S. McCracken, Chicago; A. C. Kennedy, Peoria; J. P. Lovett, Decatur; D. H. Cline, Chicago; J. P. Colver, Springfield; O. H. Bishop, Bloomington; H. P. Moore, Springfield; H. V. Lamm, Chicago; and H. V. Lamm, Chicago.

Members of the executive committee are: H. S. McCracken, Chicago; A. C. Kennedy, Peoria; J. P. Lovett, Decatur; D. H. Cline, Chicago; J. P. Colver, Springfield; O. H. Bishop, Bloomington; H. P. Moore, Springfield; H. V. Lamm, Chicago; and H. V. Lamm, Chicago.

Members of the executive committee are: H. S. McCracken, Chicago; A. C. Kennedy, Peoria; J. P. Lovett, Decatur; D. H. Cline, Chicago; J. P. Colver, Springfield; O. H. Bishop, Bloomington; H. P. Moore, Springfield; H. V. Lamm, Chicago; and H. V. Lamm, Chicago.

Members of the executive committee are: H. S. McCracken, Chicago; A. C. Kennedy, Peoria; J. P. Lovett, Decatur; D. H. Cline, Chicago; J. P. Colver, Springfield; O. H. Bishop, Bloomington; H. P. Moore, Springfield; H. V. Lamm, Chicago; and H. V. Lamm, Chicago.

Members of the executive committee are: H. S. McCracken, Chicago; A. C. Kennedy, Peoria; J. P. Lovett, Decatur; D. H. Cline, Chicago; J. P. Colver, Springfield; O. H. Bishop, Bloomington; H. P. Moore, Springfield; H. V. Lamm, Chicago; and H. V. Lamm, Chicago.

Members of the executive committee are: H. S. McCracken, Chicago; A. C. Kennedy, Peoria; J. P. Lovett, Decatur; D. H. Cline, Chicago; J. P. Colver, Springfield; O. H. Bishop, Bloomington; H. P. Moore, Springfield; H. V. Lamm, Chicago; and H. V. Lamm, Chicago.

Members of the executive committee are: H. S. McCracken, Chicago; A. C. Kennedy, Peoria; J. P. Lovett, Decatur; D. H. Cline, Chicago; J. P. Colver, Springfield; O. H. Bishop, Bloomington; H. P. Moore, Springfield; H. V. Lamm, Chicago; and H. V. Lamm, Chicago.

## PICK SPRINGFIELD FOR CONVENTION

U. C. T. Will Hold Next Meeting in Capital City.

DECATUR MAN IS HONORED

F. F. Lovett Is Elected Grand Commercial Travelers' Association at Chicago Session.

Springfield.—The United Commercial Travelers' Association of Illinois at the state convention in Chicago picked Springfield for the next meeting place.

It was decided to send a delegation to the national convention in Columbus, Ohio, to be held at the home for the establishment of a home for the blind in Columbus, Ohio.

A fund of \$10,000 already has been raised and the delegation will be sent to obtain an appropriation to build the home and provide for its permanent installation.

State officers elected were as follows: F. F. Lovett, Decatur, grand secretary; C. A. Woolley, Chicago, grand treasurer; T. W. Davis, Peoria, grand secretary; A. V. Varian, Peoria, grand secretary; O. H. Bishop, Bloomington, grand secretary; H. P. Moore, Springfield, grand secretary.

Members of the executive committee are: H. S. McCracken, Chicago; A. C. Kennedy, Peoria; J. P. Lovett, Decatur; D. H. Cline, Chicago; J. P. Colver, Springfield; O. H. Bishop, Bloomington; H. P. Moore, Springfield; H. V. Lamm, Chicago; and H. V. Lamm, Chicago.

Members of the executive committee are: H. S. McCracken, Chicago; A. C. Kennedy, Peoria; J. P. Lovett, Decatur; D. H. Cline, Chicago; J. P. Colver, Springfield; O. H. Bishop, Bloomington; H. P. Moore, Springfield; H. V. Lamm, Chicago; and H. V. Lamm, Chicago.

Members of the executive committee are: H. S. McCracken, Chicago; A. C. Kennedy, Peoria; J. P. Lovett, Decatur; D. H. Cline, Chicago; J. P. Colver, Springfield; O. H. Bishop, Bloomington; H. P. Moore, Springfield; H. V. Lamm, Chicago; and H. V. Lamm, Chicago.

Members of the executive committee are: H. S. McCracken, Chicago; A. C. Kennedy, Peoria; J. P. Lovett, Decatur; D. H. Cline, Chicago; J. P. Colver, Springfield; O. H. Bishop, Bloomington; H. P. Moore, Springfield; H. V. Lamm, Chicago; and H. V. Lamm, Chicago.

Members of the executive committee are: H. S. McCracken, Chicago; A. C. Kennedy, Peoria; J. P. Lovett, Decatur; D. H. Cline, Chicago; J. P. Colver, Springfield; O. H. Bishop, Bloomington; H. P. Moore, Springfield; H. V. Lamm, Chicago; and H. V. Lamm, Chicago.

Members of the executive committee are: H. S. McCracken, Chicago; A. C. Kennedy, Peoria; J. P. Lovett, Decatur; D. H. Cline, Chicago; J. P. Colver, Springfield; O. H. Bishop, Bloomington; H. P. Moore, Springfield; H. V. Lamm, Chicago; and H. V. Lamm, Chicago.

Members of the executive committee are: H. S. McCracken, Chicago; A. C. Kennedy, Peoria; J. P. Lovett, Decatur; D. H. Cline, Chicago; J. P. Colver, Springfield; O. H. Bishop, Bloomington; H. P. Moore, Springfield; H. V. Lamm, Chicago; and H. V. Lamm, Chicago.

Members of the executive committee are: H. S. McCracken, Chicago; A. C. Kennedy, Peoria; J. P. Lovett, Decatur; D. H. Cline, Chicago; J. P. Colver, Springfield; O. H. Bishop, Bloomington; H. P. Moore, Springfield; H. V. Lamm, Chicago; and H. V. Lamm, Chicago.

Members of the executive committee are: H. S. McCracken, Chicago; A. C. Kennedy, Peoria; J. P. Lovett, Decatur; D. H. Cline, Chicago; J. P. Colver, Springfield; O. H. Bishop, Bloomington; H. P. Moore, Springfield; H. V. Lamm, Chicago; and H. V. Lamm, Chicago.

Members of the executive committee are: H. S. McCracken, Chicago; A. C. Kennedy, Peoria; J. P. Lovett, Decatur; D. H. Cline, Chicago; J. P. Colver, Springfield; O. H. Bishop, Bloomington; H. P. Moore, Springfield; H. V. Lamm, Chicago; and H. V. Lamm, Chicago.

Members of the executive committee are: H. S. McCracken, Chicago; A. C. Kennedy, Peoria; J. P. Lovett, Decatur; D. H. Cline, Chicago; J. P. Colver, Springfield; O. H. Bishop, Bloomington; H. P. Moore, Springfield; H. V. Lamm, Chicago; and H. V. Lamm, Chicago.

Members of the executive committee are: H. S. McCracken, Chicago; A. C. Kennedy, Peoria; J. P. Lovett, Decatur; D. H. Cline, Chicago; J. P. Colver, Springfield; O. H. Bishop, Bloomington; H. P. Moore, Springfield; H. V. Lamm, Chicago; and H. V. Lamm, Chicago.

Members of the executive committee are: H. S. McCracken, Chicago; A. C. Kennedy, Peoria; J. P. Lovett, Decatur; D. H. Cline, Chicago; J. P. Colver, Springfield; O. H. Bishop, Bloomington; H. P. Moore, Springfield; H. V. Lamm, Chicago; and H. V. Lamm, Chicago.

Members of the executive committee are: H. S. McCracken, Chicago; A. C. Kennedy, Peoria; J. P. Lovett, Decatur; D. H. Cline, Chicago; J. P. Colver, Springfield; O. H. Bishop, Bloomington; H. P. Moore, Springfield; H. V. Lamm, Chicago; and H. V. Lamm, Chicago.

## Sick Women Made Well

Reliable evidence is abundant that women are constantly being restored to health by Lydia E. Pinkham's Vegetable Compound

Lydia E. Pinkham's Vegetable Compound

The many testimonial letters that we are continually publishing in the newspapers—hundreds of them—are all genuine, true and unsolicited expressions of heartfelt gratitude for the freedom from suffering that has come to these women solely through the use of Lydia E. Pinkham's Vegetable Compound.

Money could not buy nor any kind of influence obtain such recommendations; you may depend upon it that any testimonial we publish is honest and true—if you have any doubt of this write to the women whose true names and addresses are always given, and learn for yourself.

**Read this one from Mrs. Waters:** CAYNES, N.J.—"I was sick for two years with nervous spells, and my kidneys were so bad that I had to use a catheter, and I was unable to get any rest. I had no appetite, and I was unable to get any rest. I had no appetite, and I was unable to get any rest."

**And this one from Mrs. Haddock:** UTAH, ORE.—"I was weak and nervous, not able to do my work and I was unable to get any rest. I had no appetite, and I was unable to get any rest. I had no appetite, and I was unable to get any rest."

**Now answer this question if you can.** Why should a woman continue to suffer without first giving Lydia E. Pinkham's Vegetable Compound a trial? You know that it has saved many others—why should it fail in your case?

**For 30 years Lydia E. Pinkham's Vegetable Compound has been a standard remedy for women's ailments.** No one sick with woman's ailments should neglect to try this famous medicine made from roots and herbs. It has restored so many suffering women to health.

**Write to LYDIA E. PINKHAM MEDICINE CO., 233 N. BROADWAY, NEW YORK, N.Y.** Your letter will be opened, read and answered by a woman and held in strict confidence.

**For 30 years Lydia E. Pinkham's Vegetable Compound has been a standard remedy for women's ailments.** No one sick with woman's ailments should neglect to try this famous medicine made from roots and herbs. It has restored so many suffering women to health.

**Write to LYDIA E. PINKHAM MEDICINE CO., 233 N. BROADWAY, NEW YORK, N.Y.** Your letter will be opened, read and answered by a woman and held in strict confidence.

**For 30 years Lydia E. Pinkham's Vegetable Compound has been a standard remedy for women's ailments.** No one sick with woman's ailments should neglect to try this famous medicine made from roots and herbs. It has restored so many suffering women to health.

**Write to LYDIA E. PINKHAM MEDICINE CO., 233 N. BROADWAY, NEW YORK, N.Y.** Your letter will be opened, read and answered by a woman and held in strict confidence.

**For 30 years Lydia E. Pinkham's Vegetable Compound has been a standard remedy for women's ailments.** No one sick with woman's ailments should neglect to try this famous medicine made from roots and herbs. It has restored so many suffering women to health.

**Write to LYDIA E. PINKHAM MEDICINE CO., 233 N. BROADWAY, NEW YORK, N.Y.** Your letter will be opened, read and answered by a woman and held in strict confidence.

**For 30 years Lydia E. Pinkham's Vegetable Compound has been a standard remedy for women's ailments.** No one sick with woman's ailments should neglect to try this famous medicine made from roots and herbs. It has restored so many suffering women to health.

**Write to LYDIA E. PINKHAM MEDICINE CO., 233 N. BROADWAY, NEW YORK, N.Y.** Your letter will be opened, read and answered by a woman and held in strict confidence.

**For 30 years Lydia E. Pinkham's Vegetable Compound has been a standard remedy for women's ailments.** No one sick with woman's ailments should neglect to try this famous medicine made from roots and herbs. It has restored so many suffering women to health.

**Write to LYDIA E. PINKHAM MEDICINE CO., 233 N. BROADWAY, NEW YORK, N.Y.** Your letter will be opened, read and answered by a woman and held in strict confidence.

**For 30 years Lydia E. Pinkham's Vegetable Compound has been a standard remedy for women's ailments.** No one sick with woman's ailments should neglect to try this famous medicine made from roots and herbs. It has restored so many suffering women to health.

**Write to LYDIA E. PINKHAM MEDICINE CO., 233 N. BROADWAY, NEW YORK, N.Y.** Your letter will be opened, read and answered by a woman and held in strict confidence.

## DISTEMPER

400,000 Settlers a Year

Immigration figures show that the population of Canada increased during 1913 by the addition of 400,000 new settlers from the United States and Europe.

Immigration figures show that the population of Canada increased during 1913 by the addition of 400,000 new settlers from the United States and Europe.

Immigration figures show that the population of Canada increased during 1913 by the addition of 400,000 new settlers from the United States and Europe.

Immigration figures show that the population of Canada increased during 1913 by the addition of 400,000 new settlers from the United States and Europe.

Immigration figures show that the population of Canada increased during 1913 by the addition of 400,000 new settlers from the United States and Europe.

Immigration figures show that the population of Canada increased during 1913 by the addition of 400,000 new settlers from the United States and Europe.

Immigration figures show that the population of Canada increased during 1913 by the addition of 400,000 new settlers from the United States and Europe.

Immigration figures show that the population of Canada increased during 1913 by the addition of 400,000 new settlers from the United States and Europe.

Immigration figures show that the population of Canada increased during 1913 by the addition of 400,000 new settlers from the United States and Europe.

Immigration figures show that the population of Canada increased during 1913 by the addition of 400,000 new settlers from the United States and Europe.

Immigration figures show that the population of Canada increased during 1913 by the addition of 400,000 new settlers from the United States and Europe.

Immigration figures show that the population of Canada increased during 1913 by the addition of 400,000 new settlers from the United States and Europe.

Immigration figures show that the population of Canada increased during 1913 by the addition of 400,000 new settlers from the United States and Europe.

Immigration figures show that the population of Canada increased during 1913 by the addition of 400,000 new settlers from the United States and Europe.

Immigration figures show that the population of Canada increased during 1913 by the addition of 400,000 new settlers from the United States and Europe.

Immigration figures show that the population of Canada increased during 1913 by the addition of 400,000 new settlers from the United States and Europe.

Immigration figures show that the population of Canada increased during 1913 by the addition of 400,000 new settlers from the United States and Europe.

Immigration figures show that the population of Canada increased during 1913 by the addition of 400,000 new settlers from the United States and Europe.

Immigration figures show that the population of Canada increased during 1913 by the addition of 400,000 new settlers from the United States and Europe.

Immigration figures show that the population of Canada increased during 1913 by the addition of 400,000 new settlers from the United States and Europe.

Immigration figures show that the population of Canada increased during 1913 by the addition of 400,000 new settlers from the United States and Europe.

Immigration figures show that the population of Canada increased during 1913 by the addition of 400,000 new settlers from the United States and Europe.

Immigration figures show that the population of Canada increased during 1913 by the addition of 400,000 new settlers from the United States and Europe.

Immigration figures show that the population of Canada increased during 1913 by the addition of 400,000 new settlers from the United States and Europe.

Immigration figures show that the population of Canada increased during 1913 by the addition of 400,000 new settlers from the United States and Europe.

Immigration figures show that the population of Canada increased during 1913 by the addition of 400,000 new settlers from the United States and Europe.

Immigration figures show that the population of Canada increased during 1913 by the addition of 400,000 new settlers from the United States and Europe.

Immigration figures show that the population of Canada increased during 1913 by the addition of 400,000 new settlers from the United States and Europe.

Immigration figures show that the population of Canada increased during 1913 by the addition of 400,000 new settlers from the United States and Europe.

Immigration figures show that the population of Canada increased during 1913 by the addition of 400,000 new settlers from the United States and Europe.

Immigration figures show that the population of Canada increased during 1913 by the addition of 400,000 new settlers from the United States and Europe.

Immigration figures show that the population of Canada increased during 1913 by the addition of 400,000 new settlers from the United States and Europe.

Immigration figures show that the population of Canada increased during 1913 by the addition of 400,000 new settlers from the United States and Europe.

Immigration figures show that the population of Canada increased during 1913 by the addition of 400,000 new settlers from the United States and Europe.

## Pick Springfield for Convention

U. C. T. Will Hold Next Meeting in Capital City.

DECATUR MAN IS HONORED

F. F. Lovett Is Elected Grand Commercial Travelers' Association at Chicago Session.

Springfield.—The United Commercial Travelers' Association of Illinois at the state convention in Chicago picked Springfield for the next meeting place.

It was decided to send a delegation to the national convention in Columbus, Ohio, to be held at the home for the establishment of a home for the blind in Columbus, Ohio.

A fund of \$10,000 already has been raised and the delegation will be sent to obtain an appropriation to build the home and provide for its permanent installation.

State officers elected were as follows: F. F. Lovett, Decatur, grand secretary; C. A. Woolley, Chicago, grand treasurer; T. W. Davis, Peoria, grand secretary; A. V. Varian, Peoria, grand secretary; O. H. Bishop, Bloomington, grand secretary; H. P. Moore, Springfield, grand secretary.

Members of the executive committee are: H. S. McCracken, Chicago; A. C. Kennedy, Peoria; J. P. Lovett, Decatur; D. H. Cline, Chicago; J. P. Colver, Springfield; O. H. Bishop, Bloomington; H. P. Moore, Springfield; H. V. Lamm, Chicago; and H. V. Lamm, Chicago.

Members of the executive committee are: H. S. McCracken, Chicago; A. C. Kennedy, Peoria; J. P. Lovett, Decatur; D. H. Cline, Chicago; J. P. Colver, Springfield; O. H. Bishop, Bloomington; H. P. Moore, Springfield; H. V. Lamm, Chicago; and H. V. Lamm, Chicago.

Members of the executive committee are: H. S. McCracken, Chicago; A. C. Kennedy, Peoria; J. P. Lovett, Decatur; D. H. Cline, Chicago; J. P. Colver, Springfield; O. H. Bishop, Bloomington; H. P. Moore, Springfield; H. V. Lamm, Chicago; and H. V. Lamm, Chicago.

Members of the executive committee are: H. S. McCracken, Chicago; A. C. Kennedy, Peoria; J. P. Lovett, Decatur; D. H. Cline, Chicago; J. P. Colver, Springfield; O. H. Bishop, Bloomington; H. P. Moore, Springfield; H. V. Lamm, Chicago; and H. V. Lamm, Chicago.

Members of the executive committee are: H. S. McCracken, Chicago; A. C. Kennedy, Peoria; J. P. Lovett, Decatur; D. H. Cline, Chicago; J. P. Colver, Springfield; O. H. Bishop, Bloomington; H. P. Moore, Springfield; H. V. Lamm, Chicago; and H. V. Lamm, Chicago.

Members of the executive committee are: H. S. McCracken, Chicago; A. C. Kennedy, Peoria; J. P. Lovett, Decatur; D. H. Cline, Chicago; J. P. Colver, Springfield; O. H. Bishop, Bloomington; H. P. Moore, Springfield; H. V. Lamm, Chicago; and H. V. Lamm, Chicago.

Members of the executive committee are: H. S. McCracken, Chicago; A. C. Kennedy, Peoria; J. P. Lovett, Decatur; D. H. Cline, Chicago; J. P. Colver, Springfield; O. H. Bishop, Bloomington; H. P. Moore, Springfield; H. V. Lamm, Chicago; and H. V. Lamm, Chicago.

Members of the executive committee are: H. S. McCracken, Chicago; A. C. Kennedy, Peoria; J. P. Lovett, Decatur; D. H. Cline, Chicago; J. P. Colver, Springfield; O. H. Bishop, Bloomington; H. P. Moore, Springfield; H. V. Lamm, Chicago; and H. V. Lamm, Chicago.

Members of the executive committee are: H. S. McCracken, Chicago; A. C. Kennedy, Peoria; J. P. Lovett, Decatur; D. H. Cline, Chicago; J. P. Colver, Springfield; O. H. Bishop,

