

"Show Boat" Is Week-End Feature at Catlow Theatre

Fight Pictures Run Tonight and Friday; Start Gift Events

The official picture of the Schenck-Louis fight are now being shown at the Catlow theatre tonight in conjunction "The Unguarded Hour," and Friday with the feature, "Big Brown Eyes."

In "The Unguarded Hour," Franchot Tone plays a fiery English prosecutor who is taught that circumstantial evidence sometimes lies far from truth and justice. Loretta Young plays opposite as his wife, and the feature includes Lewis Stone, Roland Young and Jessie Ralph.

Joan Bennett and Cary Grant star in "Big Brown Eyes," a story of a maniacist who knows "all the answers," and whose shrewdness leads to the capture of a gang of jewel thieves.

"I Married a Doctor," to be screened Saturday night, is an adaptation of Sinclair Lewis' "Main Street," and has for its stars, Pat O'Brien, Josephine Hutchinson, Guy Gibbee and Louise Fazenda.

The first of the local merchants' cooperative gift events will be an additional attraction of outstanding interest.

The 1936 version of Edna Ferber's, "Show Boat" is scheduled for Sunday, Monday and Tuesday, with matinee Sunday.

Trene Dames, Alan Jones, Charles Winninger, Paul Robeson and J. Farrell MacDonald head the imposing cast of this romantic and inspiring musical drama of the South.

The bargain night offering will fall on Wednesday of next week. Dice Moran in "Treacherly Rides the Range" will be the feature number, with an array of interesting short subjects added. A return showing of "The Connecticut Yankee," starring Will Rogers, will follow with a two-day run.

Real Estate Transfers

COOK COUNTY
Barrington
That pt SE 1/4, 23-42-9 cont 115 acres m or l; George W Humphrey to Sidney Metz; R S 415; May 14; 416.

Wheeling
G Hochberger's Farm, l ex R R No 11; S 1/2 S 1/2 E 1/2 of L 2 W of Milwaukee rd, 1-2 & 3-4-11; Frank L Baker et al by Spec Comm to L Philip Denoyer; R S 428; June 3; 429, 430.

Busses Eastern Add to Mt Prospect
L 15 B 9, E 1/2 12-41-11; First Natl Bk tr to Arnold G Carlson; R S 48; May 29; 4800.

Strip of Land of SW 1/4 SE 1/4 21 SW from Hand rd, cont 3.4 acres approx 41-11; Leo A Bury to Paul & Anna H Schmidt; May 29; 410.

Palatine
McIntosh Palatine Est, Unit No 1, L 2 B 4, SE 1/4 SW 1/4 23 and pt 23-42-10; Arthur T McIntosh tr to Herman E Strandberg; R S 50; May 29; 410.

Trust Deeds and Mortgages
Barrington
Daniel C Gibb, guardian of Ernest Henry and Lizzie Rieke, to William H Bartels; S 1/2 SW 1/4 13-42-9, cont 80 acres m or l; filed 6-1; 10-23-36; 5 1/2 per cent; 433-500.

Wheeling
Harry F Schmidt to Madison-Crawford Natl Bk; L 12 B 12 Hill Crest sub NE 1/4 SW 1/4 34-42-11 and o p; filed 5-29; 433.50 m or l; 5 per cent; 43000.

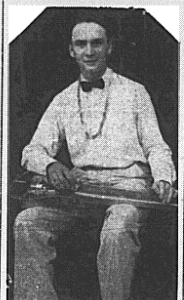
Foreclosure Suits
Palatine
293 W Chicago ave. HOLC vs

Two-Piece Summer Suits

Let me make a suit for you that will give real comfort and perfect fit. I have some beautiful wools and gabardines for long wearing garments.

Matthew Pecak TAILOR
203 East Station St.
Barrington Illinois

Plays Electric Guitar



ELMER D. HERRICK

Elmer D. Herrick will demonstrate the electric guitar which he is shown playing here at the Town Shop Saturday, July 11, from 2:30 to 8:15 p. m. He is a competent player and has done concert work for a number of years. He is also a teacher with studios in many towns along the North Western from Chicago to Arlington Heights and Palatine. Barrington is his latest addition to the chain. Mr. Herrick has been teaching in the vicinity for six years.

The guitar which he uses has many exceptional advantages including sweetness of tone and volume sufficient to make it practical for either solo or accompaniment purposes with the largest orchestra. It is an ideal radio instrument, carrying full volume with no distortion of tone, and with four control buttons which permit the performer to secure the exact shade of tone he desires at exactly the right volume, instantly.

Carl H Krambler, Dkt No 36-8-6487, Soirs, MacChesney & Becker; 4625.

Wheeling
Morris or More ave, near Milwaukee ave. HOLC vs Roy Sany Dkt No 36-8-7642. Solr H V Silver-trust; 45,925.

Side of Palatine rd, between Elmhurst rd & Soir R R William H Coswell vs Paul F Knahe, Dkt No 36-C-5815. Sir Chaveriat & Chaveriat; 75500.

Real Estate Transfers Filed in Lake Co. Recorder's Office
Howard L. Scott, Recorder

M C Hallen to P E Ingram & W Jt tens QCD; Lot 19 Bk 14 A T McIntosh & Co's Northwest hwy add to Barrington, Sec 36.

F Sandman & wf to Wm Schumacker WD; Lot 43 St Paul's Cemetery.

First Natl Bank of Chicago, Tr to H H Burgess Trustee's Deed Lot 9 Bk 33 Unit 1 Biltmore Country Estate, Secs 13, 14 & 23.

B E Wallace & wf to First Natl Bank of Chicago, Tr Deed Lot 8

Blk 14 Unit 1, Biltmore Country Estate, Sec 13.

H F Ostrander & wf to W F Yerkes WD; Lot 21 Bk 20 Tower Lake Estate, Unit 1, Sec 2.

W Hobson & wf to W Hobson WD Lot 19 (ex pt) Chicago Highlands Secs 25 etc.

S Raiche & wf to J Hilgenberg & wf Jt tens WDA tract in Sec 26.

A H Abbot & wf to C Westman & O Barge WD Lot 17 Abbott's Add to Normandy Sec 14.

I G Hager & wf to First Natl Bank of Chicago Tr D Lot 1 Bk 2 Unit 1 Biltmore Country Estate Sec 13.

G C Klingenberg to C S Klingenberg QCD N 1 acres Bk 22 S 1/2 of Lots 11 & 18 Chicago Highlands.

First Natl Bank of Chicago Tr to J E & S Chapek Jt tens D Lots 2, 3 & 5 Bk 5 Unit 1 Biltmore Country Estate Secs 13, 14 & 23.

First Natl Bank of Chicago Tr to J H Kramer & F M Kramer Jt tens Trustee's D Lot 7 Bk 28 Unit 1 Biltmore Country Estate Sec 13, 14 & 23.

D Bk 4, 5, 6, 7 & 8 Jos S Haas Sub.

E Magull & wf to R H Schustad WD; NW qr Sec 2.

H T Cook & wf and R Paddock & wf to J & L Wernse Jt tens WD Lot 19 Elmcrest in Cook & Paddock's Bangs Lake Sub Secs 23, 24 & 26.

First Natl Bank of Chicago Tr to J E & S Chapek Jt tens D Lots 2, 3 & 5 Bk 5 Unit 1 Biltmore Country Estate Secs 13, 14 & 23.

First Natl Bank of Chicago Tr to J H Kramer & F M Kramer Jt tens Trustee's D Lot 7 Bk 28 Unit 1 Biltmore Country Estate Sec 13, 14 & 23.

First Natl Bank of Chicago Tr to E C Malmgren & wf Jt tens D Lot 17 Bk 6 Unit 1 Biltmore Country Estate Secs 13, 14 & 23.

Ela
C Holtz & wf to B E Youngberg QCD NE qr of SW qr & pt W 1/2 of SE qr Sec 33.

B E Youngberg to C & E Holtz & wf tens QCD NE qr of SW qr in SE qr of Sec 33.

H N Johnson & wf to A T McIntosh Tr Deed in Trust; A tract in SE qr of Sec 17.

E J Green & wf to E E Green WD Pt Lot 2 of NW qr of Sec 6.

Fremont
E T Williamson & hus to R L Holland & wf Jt tens WD A tract of land in SE qr Sec 27.

C H Hoag & F W Buck Sue Tr to M C Capen Trustee's Deed Lot 72 Second Add to Oak Terrace Sub Sec 36.

J P Quint to M Crona Lots 102 & 103 John Wiech's First Add to Oak Terrace Sub Sec 36.

M Crona to J P Quint, J Quint Sr & B Quint QCD Lots 102 & 103 John Wiech's First Add to Oak Terrace Sub Sec 36.

C H Hoag & F W Buck Sue Tr to M & M Norman Jt tens Trustee's Deed Lot 65 Oak Terrace Sub Sec 36.

Chicago T & T Co. Tr to H R Napp & wf Jt tens D Lot 28 Bk 1 West Shore Park, Sec 36.

H R Weinacker to W D Napp & wf Jt tens D Lot 20 Bk 1 West Shore Park, Sec 36.

A Janyia & wf to V Heller & wf Jt tens WD Lot 174 John Wiech's First Add to Oak Terrace Sub Sec 36.

Vernon
Chicago T & T Co. Tr to H Kashan & wf Jt tens DEK NW qr of SW qr or NW qr of Sec 18.

Carl Harris & wf to B P Sears WD Lots 2 & 3 of a Survey of Lot 2 of SW qr of Sec 18.

Wandauna
W C Hubbel & wf to F E Ehrhardt & wf Jt tens WD; Lot 2 Lake Shore Park Sub, Sec 25.

Master in Chancery to R Shaw

Drouth Increases Danger to Stock of Plant Poison

Danger of plant poisoning which annually kills a million dollars' worth of Illinois livestock grows greater as the extended drouth adds to the poor pasture condition of mid-summer, said J. Pieper, association professor of crop production, college of agriculture, University of Illinois, in warning Illinois farmers against pasture practices which fail to take poison plants into consideration.

Shampay Cleaners & Launderers

Beautiful Laundering of Wash Wear

We have a reputation for unusually fine work in this department. Fine laundering and careful finishing that will give maximum wear to your wash clothes and keep you looking your best.

106 N. Hough St.
Phone Barrington 380

"As pastures get short, livestock will eat almost any vegetation, including such poisonous plants as black night shade, white snake root, water hemlock, whorled milk weed and Jimson weed," Pieper said.

"To prevent serious losses of valuable livestock, the poisonous plants should be eradicated or the animals kept away from them," he continued. "In following either of these practices, the farmer must first be able to recognize poisonous plants when he sees them. The local farm adviser can assist him in becoming acquainted with the more common poisonous plants or he may send any suspicious specimens to the college of agriculture at Urbana for identification."

Pieper particularly warned against the practice of turning livestock into vegetable gardens or throwing weeds from the vegetable garden across the fence to hungry animals. A cultivated place, rich in soil fertility, is ideal for black

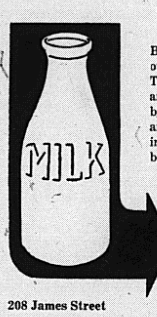
night shade, he explained. The plant is also found near old straw stacks and fence rows of cultivated fields. White snake root is found in timbered areas and water hemlock in damp places.

The practice of permitting livestock to graze the foliage of trees

is also fraught with danger, he pointed out. Trees such as buckeye, wild cherry, locust and Kentucky coffee tree are poisonous to livestock. He also warned against trimming laurel, lilac and other decorative plants and feeding the branches to livestock.

Here's to Health

From the standpoint of health, milk is conceded to be the almost perfect food. For it contains practically all the elements the human body needs for building sound health and warding off disease.

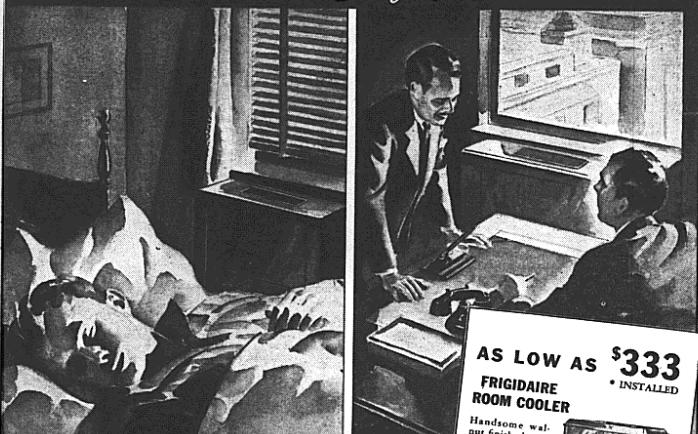


For purity, use BRANDT'S milk and other dairy products. Their safety and quality are assured at all times by thorough chemical and bacteriological examinations by Suburban Laboratories, Incorporated.

Brandt Dairy

208 James Street Tel. Barrington 370

LIVE AND WORK IN Comfort THIS SUMMER



Now on Sale AT YOUR PUBLIC SERVICE STORE!

AS LOW AS \$333 * INSTALLED

FRIGIDAIRE ROOM COOLER

Handsome walnut finished cabinet will harmonize with any surroundings. Easily installed. Completely self-contained. Price includes up to 40-foot water connection and 40 feet of wiring, as low as \$333.

Larger Model at \$452

MODERN FRIGIDAIRE ELECTRIC ROOM COOLERS

New, low cost, self-contained air conditioning units are ideal and practical for use in home and office.

Your Public Service Store now brings to you another modern advancement for increasing your comfort. Now on display in the various stores is the new Frigidaire Electric Room Cooler... a compact, complete air-conditioning unit for making a room in your home or your office more livable in hot summer weather.

This unit, because it is completely self-contained, requires no remodeling work, no big construction job when it is installed. A simple water connection, a convenient electric wall outlet and you're ready to flip the switch and enjoy the many benefits of cleaned, cooled, refreshing air. This Frigidaire Room Cooler lowers the temperature of the air in your room, circulates it constantly, and removes the excess humidity that causes heat to be so unbearable in summer.

See this Room Cooler at your earliest opportunity. For a small cost... the payments are easily arranged... you'll be able to make your office or a room in your home a more pleasant place to live during the scorching months. Visit your nearest Public Service Store. Let us explain the many advantages of this Frigidaire unit. Learn, too, how easy and inexpensive it is to enjoy this remarkable comfort.

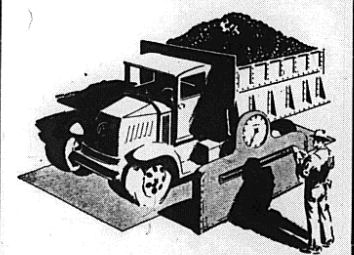
PUBLIC SERVICE COMPANY OF NORTHERN ILLINOIS

DRIVE HEAT OUT

of your house with an ATTIC COOLING SYSTEM

New ventilating plan draws off the blanket of hot, stagnant air from the attic and circulates cool, night-time air throughout the house. Costs only a few cents a day to operate. Ask about this new plan that will cool your house this summer.

Summer Coal Prices in Effect Until July 15 Only



Save Dollars on a Load of COAL at Summer Prices

Coal is a commodity and the prices of all commodities are rising. No one can forecast how high coal prices will go next winter. That's why you should fill your bins now. Call us today.

Lageschulte & Hager
Incorporated
Tel., Barrington 5

OL rttable

A well insulated house is cool and comfortable on the hottest days. Likewise, it is economical to heat in cold weather.

Insulation keeps heat out in summer and in winter, paying for itself in a short time.

Forms of insulation which explain to you:

HERMOFIL—This is poured into place.

BOARD—Is laid in of or over ceiling.

(or rock wool) is in rafters or joists.

Aluminum foil on placed over rafters

Improvement Home

Wheeler Co.
Barrington 22 Hough St.

BRING RESULTS

Outlet amazingly LOW PRICES!

Waffle Cloth Socks

Socks in all summer misses, women size 12 or 53.

SOCKS

COATS

2.50

Quality any this is an actual ment priced at

ss Co.