

Classified Advertisements

Bring Quick Results
Telephone 1

Rate:
10c a Line
Minimum, 50c

FOR RENT

7 ROOM MODERN HOUSE at 622 Grove ave. See Mrs. H. A. Landwer at home or call Barr. 59-M. Also complete bed and bookcase for sale.

4 ROOM BUNGALOW with bath, enclosed porch and garage. Heat and water furnished. Available Dec. 1. Call at 610 Division St., in the rear. Also 75 hens for sale.

FOR SALE

A QUANTITY of clean slough hay suitable for covering shrubbery. Also feed hay. Jos. Doyle, 1 mile E. of Fox River Grove on Rt. 12.

WHITE LEGHORN HENS from trusted pedigree stock. Roger's Leghorn Farm, Elgin, Ill. Phone Elgin 373 or 328.

MIXED BAKED HAY for sale. Hilltop Farm, Dundee road. Tel. Barrington 122-J-2.

CORN FED TURKEYS, 25c per lb. Geese, 25c; ducks 20c; hens, 25c; unдресsed. Criswell Farm, corner Rte. 59 and Miller road. Tel. Barrington 137-W-1.

HOLIDAY POULTRY, ducks, geese and chickens. Village delivery. Tel. Barrington 139-M-2. Mrs. Frank E. Bauman.

FULL SIZE BABY BED, complete. Good condition. Call Barrington 677-J.

BUY YOUR XMAS BERTHES NOW! Special assortment at Vanity Beauty Shoppe Saturday, Nov. 20. Smart patterns. Reasonably priced. Circle D of Methodist church.

DUCKS FOR SALE. Dressed and delivered. Call Mrs. John Algrin, Barrington 149-J-2.

5100 GENERAL ELECTRIC RADIO, \$35. Floor lamp and junior lamp, each \$3. Call Barrington 311-R. 539 Prairie Avenue, Barrington.

FOR SALE: 4 room cottage and bath, full basement; nicely located 5 blocks from Barrington depot, and school. Priced for quick sale. \$1750. Frank Treelik, 252 E. Main St. Phone 685.

HELENE LEDERER
In Lake Zurich on Rand road, 7 mi has with ice screened-in porches on wooded lot 9x330. Private beach. Ideal for tea room. Triangular tract at Northwest Highway in Palatine township about 8 aca. Excellent location for gas station or tavern. \$3,000.
Near Crystal Lake 242 ac farm. 10 rm hse with bath, 3-car garage, ice orchard, 10-cow barn, ice granary, poultry hse. Greatly reduced for quick sale.

In Barrington's most exclusive estate district, opposite Barrington Hills Country club, beautiful building site of 22 1/2 aca with private lake.
3 building lots in Wheaton. Attractively priced.
10 ac farm. Lge white frame hse, complete set of farm bldgs, woven wire fences, deep well, windmill. Equipment optional.

WANTED: Farms to rent to reliable parties.
HELENE LEDERER
REALTOR
250 E. Main St. Tel. Barr. 37

FOR SALE

WINTER CLOTH COAT, green, with matching hat, size 18. Good condition. Price \$17. Tel. Barrington 515-R.

WANTED

A HOME for 3 fine boys, ages 6 to 11, in vicinity of Barrington. All in school. Dad home evenings. Or a mature woman interested in housekeeping for them and their dad. Give cost or wages expected. References in first letter. Address Barrington Review No. 2598.

HELP WANTED

GOOD NEARBY ROUTE available of 100 Rawlston consumers. No capital or experience needed. Large sales mean big profits. Permanent. Full time. Write Rawleigh's, Dept. ILK-44-104, Prospect, Ill.

LOST

HAM strayed from farm on Cuba and Harbour roads Monday morning. Anyone seeing same or knowing of his whereabouts, please call A. Stabler, Barr. 146-R-1.

MALE IRISH SETTER, answers to name "Pero," lost Saturday morning, 7 miles south of Barrington. Reward. Call Glen Elynn 522, or Barrington 125-M-2.

MISCELLANEOUS

FIRST LESSON FREE on guitars, mandolin, ukulele. Pay no more for private lessons than class. No contract. Remond McKamey, Olive Swanson Studios. Phone Elgin 6373.

TURKEY DINNER, BAZAAR Friday, Nov. 19, Methodist church. Dinner at 5:30 p. m. Call Barr. 673-M or 198-W for tickets, adults 60c, children 35c.

BINGO PARTY at the I. O. O. F. hall Monday evening, Nov. 22, at 8:30 p. m. Sponsored by Rebekah lodge. Admission 25c. Refreshments.

PHILATHEA CLASS of Salem church will hold a bakery goods and fancy work sale Saturday, Nov. 20, at Brewer Motor Sales showrooms, 202 S. Cook St.

HARVEY WOODALL, painter and decorator. Work guaranteed. For information call Barrington 610-M. Residence, Northwest hwy. and Dundee road.

PUBLIC NOTICE is hereby given by PUBLIC SERVICE COMPANY OF NORTHERN ILLINOIS of the filing with the Illinois Commerce Commission on November 1, 1937, of a revision of its Rate Governmental Institutions Electric Service extending the applicability class of rates to include Federal military posts or hospitals and revising the terms and conditions of the rate relative to furnishing transformers.

Copies of revised rate sheets are on file in the office of the Commission and of the Company.

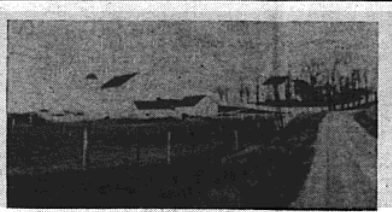
PUBLIC SERVICE COMPANY of Northern Illinois
By C. W. Bradley,
Vice President.

PUBLIC NOTICE is hereby given by PUBLIC SERVICE COMPANY OF NORTHERN ILLINOIS of the filing with the Illinois Commerce Commission on October 21, 1937, of Rider No. 25—Temporary Rate for the winter peak period hours as will be effective for the winter peak period, November to February inclusive.

Copies of said revised rider are on file in the office of the Commission and of the Company.

PUBLIC SERVICE COMPANY of Northern Illinois
By C. W. Bradley,
Vice President.

Has High Milk Sanitation Record



The J. J. Kelly farm located north of Lake Zurich has established a high rating for sanitary milk production. The farm, its equipment and stock has been rated excellent in all departments by the state board of health during the past year. A herd of Brown Swiss cows is the milk supply source.

Local Brevities

Mrs. Irving Hager, 104 Dundee avenue, spent Tuesday at Harvard with her sister, Mrs. Fred Smith.

Mrs. Alta Bennett, 201 W. Lake street, spent from Friday until Sunday with her son, Allen, at the University of Illinois.

Mr. and Mrs. W. N. Sears and daughter, Ellen and Norrine Sass of Barrington, attended a band clinic and heard a concert by the high school band of Belvidere in Belvidere, Saturday afternoon.

Mrs. Willis Powers of Barrington has entered the Sherman hospital in Elgin for treatment.

Willard Gieske of the Winnebago high school faculty, spent Sunday with his parents, Dr. and Mrs. A. G. Gieske, 312 Grove avenue.

G. G. Walgren, 216 Franklin street, returned from the Frances

Willard hospital Friday evening where he had been a medical patient. Mr. Walgren is at home this week and his condition is reported to be improving.

Mr. and Mrs. W. H. Sott, 231 W. Main street, motored to Clarence, Ia., Sunday and spent the day with Mr. and Mrs. K. L. Benner.

Mrs. Willard Abbott and daughter, Mrs. Fred Mueller, of Chicago, came out Tuesday to attend the luncheon and lecture at Jewel Tea sponsored by the W. R. C.

Joan Baptized Here
Joan Margaret Liebermann of Winnetka was baptized at the Methodist church Sunday morning following the church service. Rev. H. L. Eagle officiated.

Mr. and Mrs. A. A. Liebermann and their small daughter were week-end guests of Mrs. Liebermann's mother, Mrs. A. Weichelt, 108 W. Lake street.

QUALITY GROCERIES PROMPT SERVICE
PHONE 224 We Deliver 10 a. m. to 3 p. m.

209-215 PARK AVENUE
PLENTY OF FREE PARKING SPACE

LANDWER'S

A UNIQUE GENERAL STORE WHERE YOU ARE WELCOMED BY FOLKS WHO OWN IT

Feast of Good Things For Thanksgiving

- COFFEE (Club House) 65 cups to the lb. vacuum tin 29c
- CALUMET BAKING POWDER, 1 lb. tin 19c
- DROMEDARY DATES, pitted or unpitted, 2 pkgs. 23c
- BAKERS PREMIUM CHOCOLATE, 1/2 lb. cakes, 2 for 27c
- CATSUP, Sweetheart Brand, the finest, 2 large bottles for 29c
- APPLE SAUCE, I. G. A. Brand, (Fancy New York) No. 2 tins, 3 for 25c
- PINEAPPLE HEARTS OF GOLD (Sweetheart) Large 2 1/2 tins, each 29c; 4 for \$1.00

Fresh Pure Cream, **Butter** Guaranteed to Please per lb. **37 1/2c**

Candy French Cream (Bon Bons) per lb. **19c** 100% Filled, per lb. 19c

- MINT PATTIES, Chocolate, Club House, 1 lb. pkg. 25c; 2 for 45c
- FRESH ROASTED CHOCOLATE COVERED ALMONDS, 28 pieces to a pkg. 19c
- FRESH FLAVORED PEACHES (Sweetheart) No. 1 tall tin, 19c; large tin 29c
- CRUSHED PINEAPPLE, small cans 10c
- No. 2 can 19c; large 2 1/2 tin 28c
- PINEAPPLE JUICE, I. G. A. Brand, 12 oz. tin 10c; 6 for 59c

Fresh California **Walnuts** Large Sweet Kernels per lb. **25c**

RIPE N RAGGED Fruits (the best for flavor) 1 on Apicot, Peaches or Pineapple, the 8 for **69c**

- CRANBERRIES, Real Cape Cod, Better in flavor, 2 lbs. 29c
- 1 lb. pkgs., 2 for 29c
- SWIFTS JEWEL SHORTENING, Medium size, 3 lbs. 25c; large, lb. 19c; Extra large size, lb. 15c
- WHOLE KERNEL GOLDEN BANTAM CORN, (I. G. A.) No. 2 cans, 3 for 43c

MEN'S HOUSE SLIPPERS
Durable and comfortable, new stock, pair \$1.90; \$1.99; \$1.98

TRADE HERE AND SAVE
ROYAL BLUE STORES
BEST QUALITY ALWAYS
STUBBINS and EMERICK

Sweet Cream **Butter**
2 lbs. **78c**
Friday and Saturday Only

Thanksgiving Sale

FRESH, NEW QUALITY VALUES
CLOSED ALL DAY THURSDAY, THANKSGIVING

On Sale All Week Nov. 19 to 24, Inclusive

- SUGAR, fine gran., 10 lbs. 53c
- Powdered, C & H, 1 lb. pkg. 7c
- RAISINS, Royal Blue Seedless, 15 oz. pkg. 10c
- Seeded, 15 oz. pkg. 12c
- PEELS, Citron, Lemon, Orange, Mixed, 3-oz. pkg. 9c
- FANCY FIGS, 6-oz. pkg. 9c
- FANCY ROYAL BLUE MINCE, 9-oz. pkg. 9c
- Currais, 8-oz. pkg. 12c
- DATES, Ar-Be Selected, 2 lb. pkg. 21c
- PUMPKIN, new tasty sweet, 29-oz. lge. can 8 1/2c
- Pumpkin Pie Spice, can 9c
- POTATOES, Royal Blue Whole Sweet, 18-oz. can 12c
- MARSHMALLOWS, 1 lb. bag 17c
- OCEAN SPRAY Cranberry Sauce 17-oz. can 14c
- JUICE, pure natural tomato 3 20-oz. cans 23c
- STUFFED OLIVES, No. 5 jar 18c
- SOUP, Royal Blue tomato 4 10 1/2-oz. cans 19c
- KRISPY CRACKERS, 7-oz. pkg. 10c
- AR-BE CORN, whole kernel or Country Gen, 20-oz. can 12 1/2c
- AR-BE SWEET PEAS, 20-oz. can 14c
- GREEN BEANS, Royal Blue special pack, 19-oz. can 19c
- CATSUP, Royal Blue extra tasty 14-oz. lge. bottle 14c
- CHILI SAUCE, 12-oz. bottle 18c
- ICEBERG salad dressing—Extra whipped, qt. jar 33c
- OLIVES — Old Monk Brand (in every size)—Green, Ripe, Stuffed

Meats

- Friday and Saturday Only
- ROUND STEAK lb. **38c**
 - FRESH PORK BUTTS lb. **24c**
 - Whole or Half PORK LOIN lb. **26c**
 - Soft SUMMER SAUSAGE lb. **28c**
 - TURKEYS CHICKENS DUCKS GEESE
- Only the highest quality poultry Place your order early

FRESH FRUITS and VEGETABLES

- ORANGES, Florida, 200 size, doz. 30c
- TANGERINES, extra fancy, doz. 25c
- ASPARAGUS, Extra tall green, 2 1/2 lb. bunches 45c
- GREEN BEANS, Fancy Stringless, 2 lbs. 29c
- CRANBERRIES, Cape Cod, 2 lbs 29c
- APPLES, extra fancy boxed, Delicious, 3 lbs. 25c

- NUTS**
- WALNUTS, Calif. Large Budded, cheapest in 22 yrs., lb. 22c
 - MIXED, extra selected, lb. 21c
 - PECANS, Jumbo Paper Shell, lb. 22c

CANDY

- BON BONS, French Cream, lb. 15c
- MIXED, assorted all filled, lb. 14c
- FRENCH DRESSING, 8-oz. bot 12c
- PINEAPPLE, sliced or crushed 30-oz. can 21c
- PINEAPPLE JUICE, 18-oz. can 14c
- PURE PRESERVES, 1 lb. jar 21c
- SALT, Royal Blue, plain or iodized, 2-lb. drum 6 1/2c
- BLACK PEPPER, 8-oz. cart. 10c
- SHRIMPS, U. S. inspected, fancy, 5 1/2-oz. can 17c
- PIMENTOS, 4-oz. can 8c
- COFFEE, Maxwell House, 1 lb. can 29c
- Royal Blue, 1 lb. can 27c
- OVEN FLUFF, perfect cake flour, 2 1/2 lb. pkg. 19c
- CALUMET baking powder, 1 lb. can 19c
- CHOCOLATE, Baker's Premium 1/2 lb. bar 17c
- EXTRACT, vanilla or lemon, 1/2-oz. bottle 8c
- MILK, Royal Blue, 1 1/2 gal. oz. can 7c
- COCONUT, Baker's Moist, 4-oz. can 9c
- MOLASSES, pure New Orleans 22-oz. can 9c
- MEATS, walnut or pecan, 1/2 lb. 18c
- CRISCO, super creamed, 1 lb. can 19c
- 3 lb. can 33c
- POP CORN, 2 lbs. 25c
- PATE DE FOIE GRAS, famous from France. No. 14 Tureen \$1
- OX TONGUE, Wilson, whole cooked, 22-oz. can 85c
- AFRICA LOBSTER, Meaty Rock, Mostly solid tail meat. Ocean Fresh brand. 8-oz. can, 3 cans \$1
- RIPE OLIVES, Giant, 4-oz. can 18c
- Old Monk Brand in Every Size

Real Thanksgiving Delicacies

Never before since we have been in business have we been able to offer so many outstanding products not usually found in the ordinary food shops

- Major Gray's Chutney
- Maggis Seasoning
- Truffles Pate De Foie Gras
- Fillets of Anchovies & Paste rolled with Capers in Pure Olive Oil
- Caviar
- Martha Ann Glace Ginger
- Ginger Mint Tips
- Mint Almonds
- Spiced Almonds
- Preserved Ginger Plain or Rose
- Martha Ann Marmalade
- Martha Ann Ginger Conserve, serve with game, fowl, toast & muffins
- Charlotte Charles Heavily Branded old fashioned English Plum Pudding Hard Sauce
- 18 Month Old English Fruit Cake
- Huntley & Palmers Assorted Cheese Crackers
- FFV Cheese Favors
- Hayden's Hollandaise Sauce
- Richelieu Branded Pudding Sauce
- Date & Nut Bread
- Martha Ann Glaced Fruits
- Plumps — Something new in prunes
- Crosse & Blackwell Mincemeat
- Richelieu Brown Bread
- Old Monk Olive Oil

Thanksgiving SPECIALS

At The Ankele Bakery

Let us put the finishing touches to your Thanksgiving Dinner with a

Delicious Fruit Cake at 40c per lb. None better made at any price.

Our Mince and Pumpkin Pies delight the most particular taste. 15-25-40c each.

Holiday Fruit Stollen, the King of Coffee Cakes. Rich in fruit and nuts. Each 30c, or larger ones made to order.

Tasty Mince Meat in bulk, 15c lb. 2 lbs. 27c.

Special Dressing Bread held for Thanksgiving, 5c per loaf.

We roast your turkey for small charge.

Full line of Bread, Cakes and Pastries. Reasonable prices.

Ankele Bakery
Phone 172 We Deliver

We Deliver Phone 615 Not a Chain Store
WE GUARANTEE EVERYTHING WE SELL